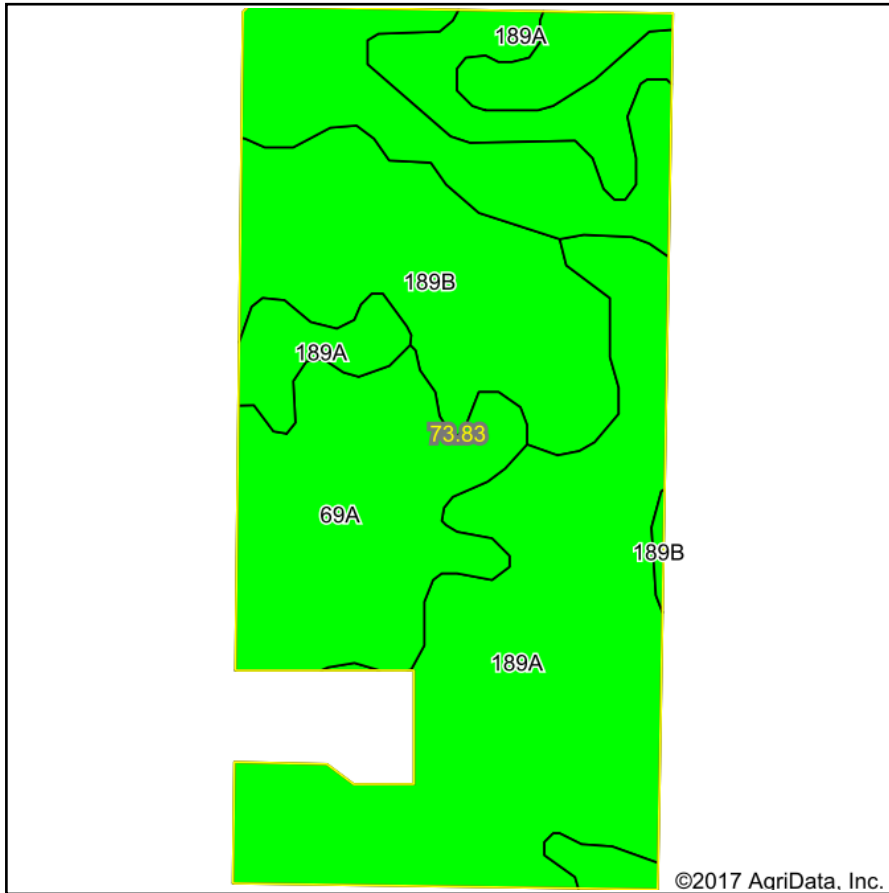
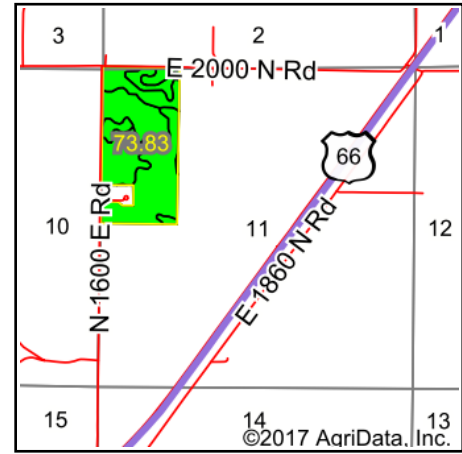


Soils Map



Soils data provided by USDA and NRCS.



State: **Illinois**
 County: **Livingston**
 Location: **11-28N-5E**
 Township: **Pontiac**
 Acres: **73.83**
 Date: **9/7/2017**



Area Symbol: IL105, Soil Area Version: 10

Code	Soil Description	Acres	Percent of field	Il. State Productivity Index Legend	Subsoil rooting ^a	Corn Bu/A	Soybeans Bu/A	Wheat Bu/A	Crop productivity index for optimum management
189A	Martinton silt loam, 0 to 2 percent slopes	33.78	45.8%		FAV	173	57	70	130
69A	Milford silty clay loam, 0 to 2 percent slopes	25.65	34.7%		FAV	171	57	68	128
**189B	Martinton silt loam, 2 to 4 percent slopes	14.40	19.5%		FAV	**171	**56	**69	**129
Weighted Average						171.9	56.8	69.1	129.1

Table: Optimum Crop Productivity Ratings for Illinois Soil by K.R. Olson and J.M. Lang, Office of Research, ACES, University of Illinois at Champaign-Urbana. Version: 1/2/2012 Amended Table S2 B811

Crop yields and productivity indices for optimum management (B811) are maintained at the following NRES web site:

<https://www.ideals.illinois.edu/handle/2142/1027/>

** Indexes adjusted for slope and erosion according to Bulletin 811 Table S3

^a UNF = unfavorable; FAV = favorable

Soils data provided by USDA and NRCS. Soils data provided by University of Illinois at Champaign-Urbana.

*c: Using Capabilities Class Dominant Condition Aggregation Method