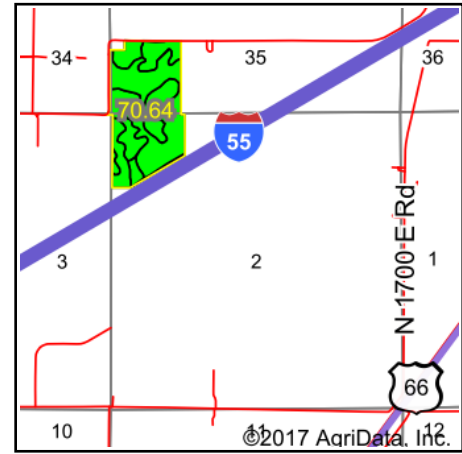
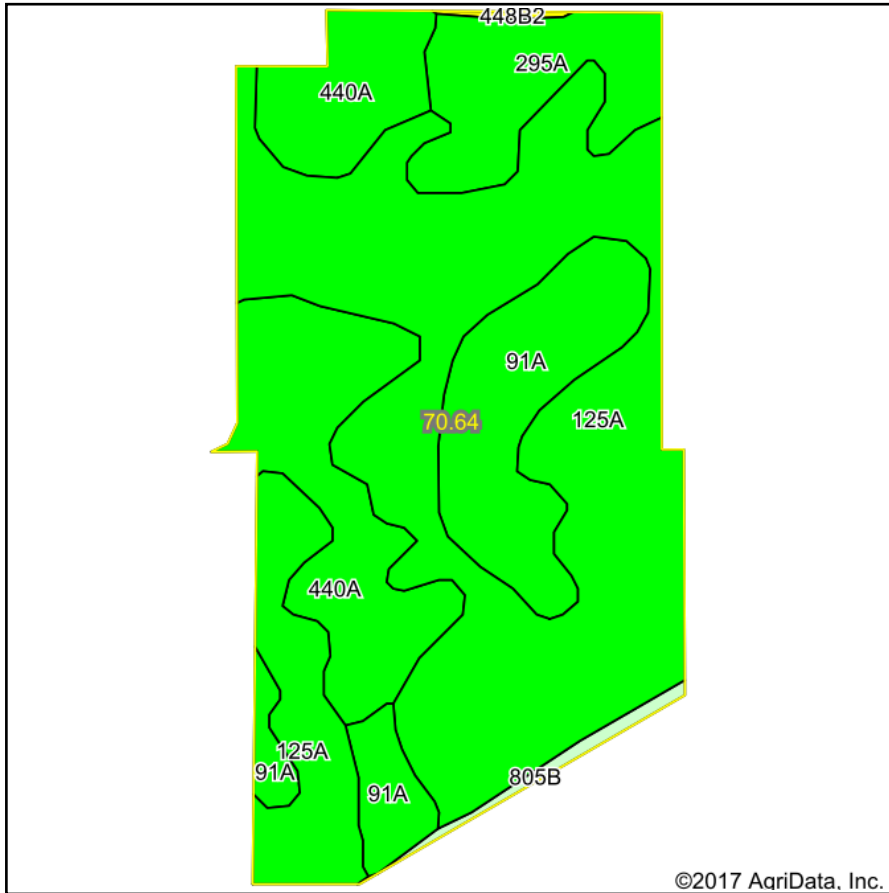


# Soils Map



State: **Illinois**  
 County: **Livingston**  
 Location: **2-28N-5E**  
 Township: **Pontiac**  
 Acres: **70.64**  
 Date: **9/7/2017**



## Area Symbol: IL105, Soil Area Version: 10

Code	Soil Description	Acres	Percent of field	Il. State Productivity Index Legend	Subsoil rooting a	Corn Bu/A	Soybeans Bu/A	Wheat Bu/A	Crop productivity index for optimum management
125A	Selma loam, 0 to 2 percent slopes	38.50	54.5%		FAV	176	57	70	129
440A	Jasper loam, 0 to 2 percent slopes	13.95	19.7%		FAV	175	57	71	130
91A	Swygert silty clay loam, 0 to 2 percent slopes	11.07	15.7%		UNF	158	52	63	118
295A	Mokena silt loam, 0 to 2 percent slopes	6.25	8.8%		FAV	172	54	66	126
805B	Orthents, clayey undulating	0.71	1.0%		CROP YIELD DATA NOT AVAILABLE				
**448B2	Mona silt loam, 2 to 5 percent slopes, eroded	0.16	0.2%		FAV	**154	**48	**60	**112
<b>Weighted Average</b>						<b>170.8</b>	<b>55.3</b>	<b>68</b>	<b>125.9</b>

**Table: Optimum Crop Productivity Ratings for Illinois Soil by K.R. Olson and J.M. Lang, Office of Research, ACES, University of Illinois at Champaign-Urbana.** Version: 1/2/2012 Amended Table S2 B811

Crop yields and productivity indices for optimum management (B811) are maintained at the following NRES web site:

<https://www.ideals.illinois.edu/handle/2142/1027/>

\*\* Indexes adjusted for slope and erosion according to Bulletin 811 Table S3

a UNF = unfavorable; FAV = favorable

Soils data provided by USDA and NRCS. Soils data provided by University of Illinois at Champaign-Urbana.

\*c: Using Capabilities Class Dominant Condition Aggregation Method