

Tract Number: 44045

Description: H18-SW1/4 Sec 31 T31N R3E

BIA Range Unit Number:

HEL Status: NHEL: no agricultural commodity planted on undetermined fields

Wetland Status: Wetland determinations not complete

WL Violations: None

Farmland	Cropland	DCP Cropland	WBP	WRP/EWP	CRP Cropland	GRP
38.93	37.8	37.8	0.0	0.0	0.0	0.0
State Conservation	Other Conservation	Effective DCP Cropland	Double Cropped	MPL/FWP		
0.0	0.0	37.8	0.0	0.0		

Crop	Base Acreage	CTAP Tran Yield	PLC Yield	CCC-505 CRP Reduction
CORN	18.7		163	0.0
SOYBEANS	18.7		46	0.0
Total Base Acres:	37.4			

Owners: JOHN E KMETZ

Other Producers: None



United States
Department of
Agriculture

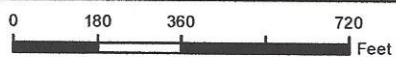
La Salle County, Illinois



Common Land Unit

- Non-Cropland
- Cropland

Tract Boundary



2016 Program Year

Map Created December 28, 2015

Wetland Determination Identifiers

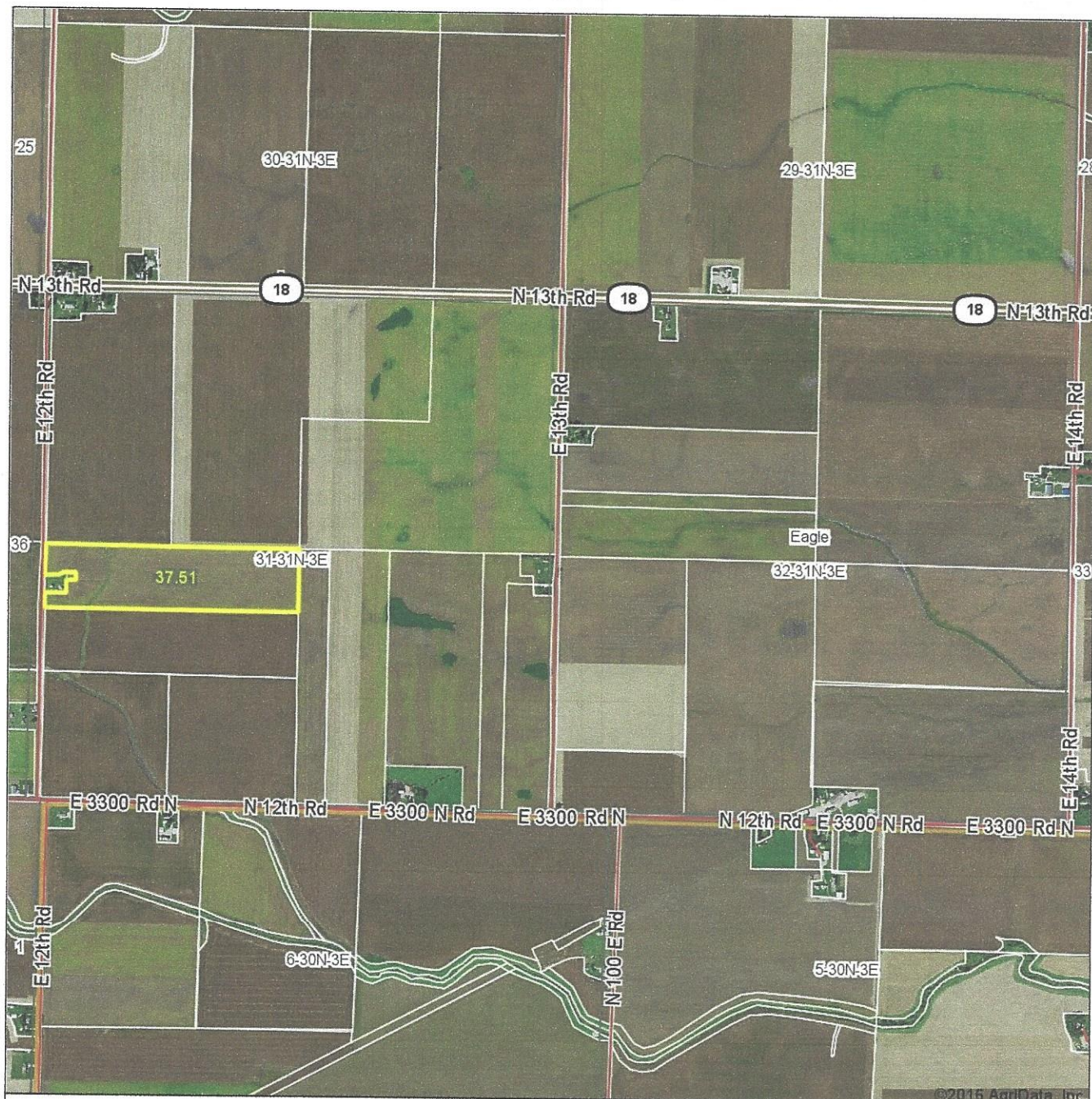
- Restricted Use
- Limited Restrictions
- Exempt from Conservation
- Compliance Provisions

Tract Cropland Total: 37.80 acres

Farm **8026**
Tract **44045**

United States Department of Agriculture (USDA) Farm Service Agency (FSA) maps are for FSA Program administration only. This map does not represent a legal survey or reflect actual ownership; rather it depicts the information provided directly from the producer and/or National Agricultural Imagery Program (NAIP) imagery. The producer accepts the data 'as is' and assumes all risks associated with its use. USDA-FSA assumes no responsibility for actual or consequential damage incurred as a result of any user's reliance on this data outside FSA Programs. Wetland identifiers do not represent the size, shape, or specific determination of the area. Refer to your original determination (CPA-026 and attached maps) for exact boundaries and determinations or contact USDA Natural Resources Conservation Service (NRCS).

Aerial Map



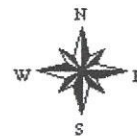
map center: 41° 6' 47.34, -88° 54' 44.75

0ft 1585ft 3169ft

Maps Provided By:

 CUSTOMIZED ONLINE MAPPING
 © AgriData, Inc. 2016 www.AgrIDataInc.com

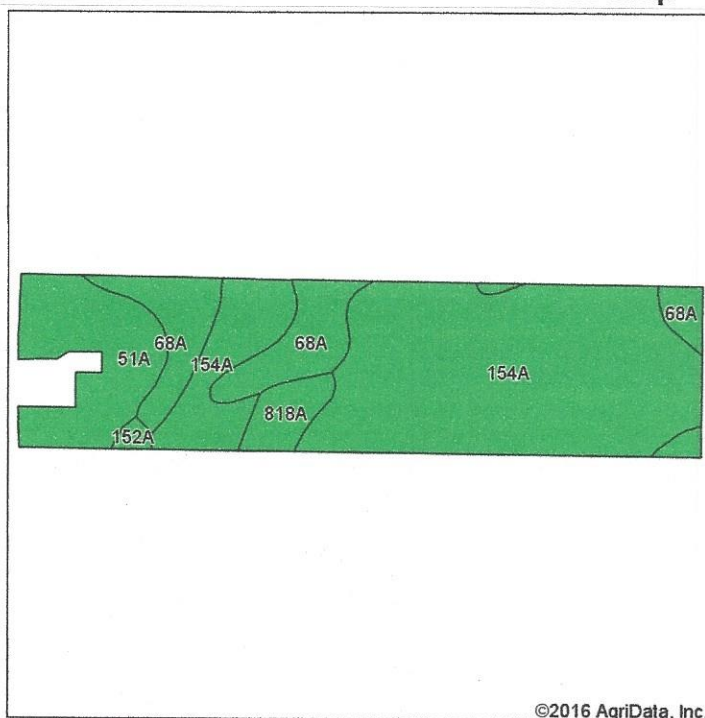
32-31N-3E
La Salle County
Illinois



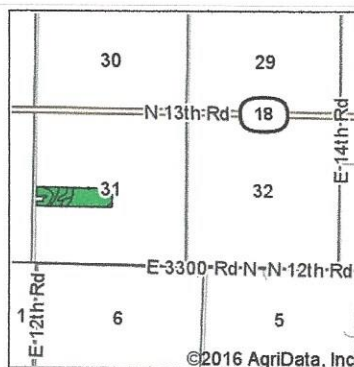
11/11/2016

Field borders provided by Farm Service Agency as of 5/21/2008. Soils data provided by University of Illinois at Champaign-Urbana.

Soils Map



Soils data provided by USDA and NRCS.



State: **Illinois**
 County: **La Salle**
 Location: **32-31N-3E**
 Township: **Eagle**
 Acres: **37.51**
 Date: **11/11/2016**

Maps Provided By:
surety
 CUSTOMIZED ONLINE MAPPING
 © AgriData, Inc. 2016 www.AgriDataInc.com



Area Symbol: IL099, Soil Area Version: 10

Code	Soil Description	Acres	Percent of field	Il. State Productivity Index Legend	Subsoil rooting a	Corn Bu/A	Soybeans Bu/A	Wheat Bu/A	Oats Bu/A b	Sorghum c Bu/A	Alfalfa d hay, T/A	Grass- legume e hay, T/A	Crop productivity index for optimum management
154A	Flanagan silt loam, 0 to 2 percent slopes	23.34	62.2%		FAV	194	63	77	102	0	0.00	5.90	144
68A	Sable silty clay loam, 0 to 2 percent slopes	6.47	17.2%		FAV	192	63	74	99	0	0.00	5.77	143
51A	Muscataune silt loam, 0 to 2 percent slopes	5.90	15.7%		FAV	200	64	75	104	138	0.00	6.02	147
818A	Flanagan-Catlin silt loams, 0 to 3 percent slopes	1.52	4.1%		FAV	191	61	75	101	0	0.00	6.25	142
152A	Drummer silty clay loam, 0 to 2 percent slopes	0.28	0.7%		FAV	195	63	73	100	0	0.00	5.64	144
Weighted Average						194.5	63.1	76.1	101.7	21.7	0.00	5.91	144.2

Table: Optimum Crop Productivity Ratings for Illinois Soil by K.R. Olson and J.M. Lang, Office of Research, ACES, University of Illinois at Champaign-Urbana. Version: 1/2/2012 Amended Table S2 B811

Crop yields and productivity indices for optimum management (B811) are maintained at the following NRES web site:

<https://www.ideals.illinois.edu/handle/2142/1027/>

** Indexes adjusted for slope and erosion according to Bulletin 811 Table S3

a UNF = unfavorable; FAV = favorable

b Soils in the southern region were not rated for oats and are shown with a zero "0".

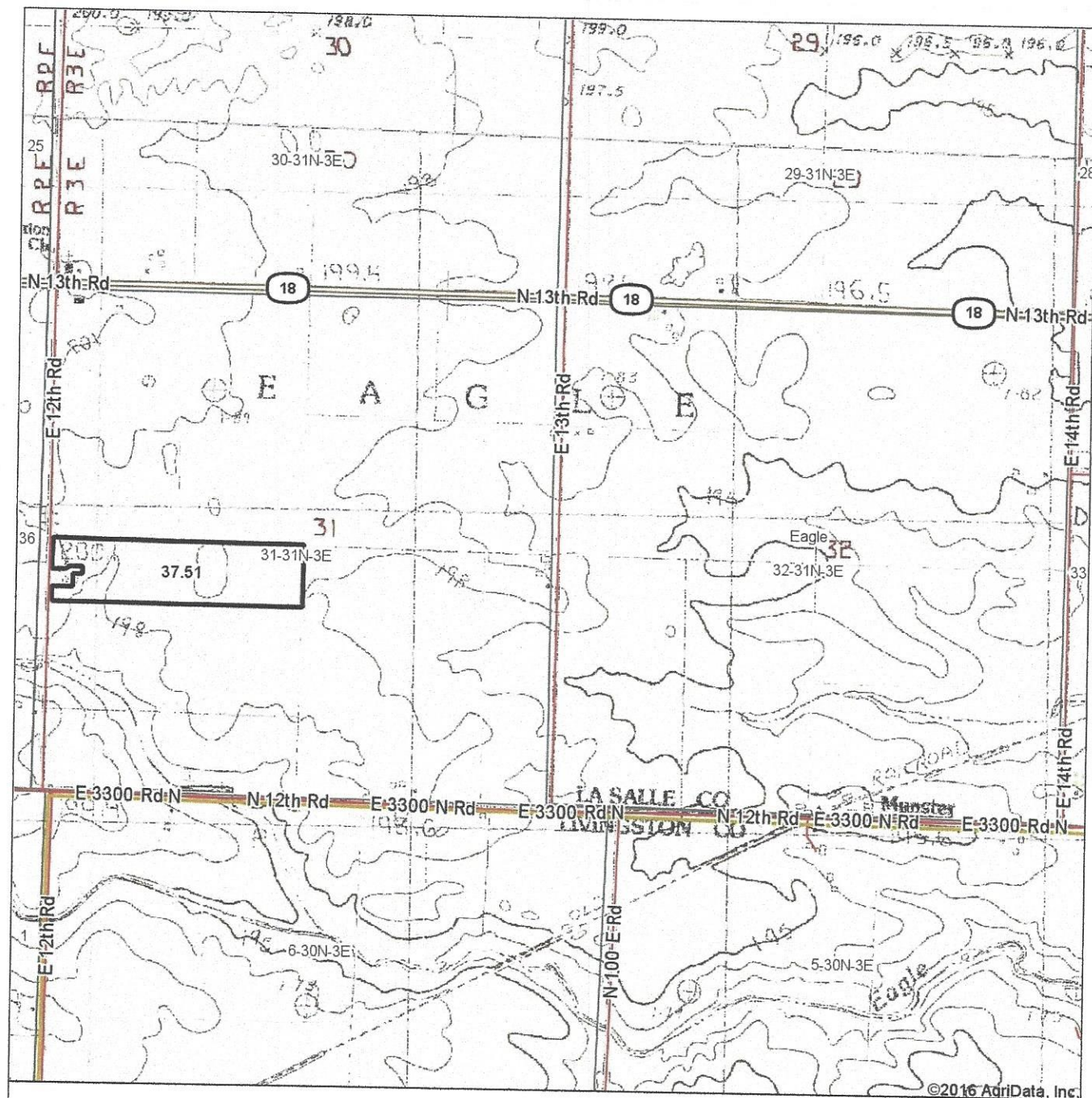
c Soils in the northern region or in both regions were not rated for grain sorghum and are shown with a zero "0".

d Soils in the poorly drained group were not rated for alfalfa and are shown with a zero "0".

e Soils in the well drained group were not rated for grass-legume and are shown with a zero "0".

*c: Using Capabilities Class Dominant Condition Aggregation Method

Topography Map



map center: 41° 6' 47.34, -88° 54' 44.75

0ft 1585ft 3169ft

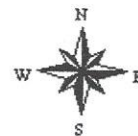
Maps Provided By:



© AgriData, Inc. 2016

www.AgriDataInc.com

32-31N-3E
La Salle County
Illinois



11/11/2016

Field borders provided by Farm Service Agency as of 5/21/2008. Soils data provided by University of Illinois at Champaign-Urbana.