

Illinois
LaSalle

U.S. Department of Agriculture
Farm Service Agency
Abbreviated 156 Farm Record

FARM: 8027

Prepared: 11/7/16 8:49 AM

Crop Year: 2017

Page: 1 of 1

Report ID: FSA-156EZ

DISCLAIMER: This is data extracted from the web farm database. Because of potential messaging failures in MIDAS, this data is not guaranteed to be an accurate and complete representation of data contained in the MIDAS system, which is the system of record for Farm Records.

Operator Name

S DAVID STIPP

Farm Identifier

Not Applicable

Recon Number

Farms Associated with Operator:

3237, 11232

CRP Contract Number(s): None

Farmland	Cropland	DCP Cropland	WBP	WRP/EWP	CRP Cropland	GRP	Farm Status	Number of Tracts
38.58	34.44	34.44	0.0	0.0	0.0	0.0	Active	1
State Conservation	Other Conservation	Effective DCP Cropland	Double Cropped	MPL/FWP				
0.0	0.0	34.44	0.0	0.0				

ARC/PLC

ARC-IC
NONE

ARC-CO
CORN, SOYBN

PLC
NONE

PLC-Default
NONE

Crop	Base Acreage	CTAP Tran Yield	PLC Yield	CCC-505 CRP Reduction
CORN	17.2		154	0.0
SOYBEANS	17.2		46	0.0
Total Base Acres:	34.4			

Tract Number: 45059

Description: M16-NE1/4 SEC 21 T31N R4E

BIA Range Unit Number:

HEL Status: NHEL: no agricultural commodity planted on undetermined fields

Wetland Status: Wetland determinations not complete

WL Violations: None

Farmland	Cropland	DCP Cropland	WBP	WRP/EWP	CRP Cropland	GRP
38.58	34.44	34.44	0.0	0.0	0.0	0.0
State Conservation	Other Conservation	Effective DCP Cropland	Double Cropped	MPL/FWP		
0.0	0.0	34.44	0.0	0.0		

Crop	Base Acreage	CTAP Tran Yield	PLC Yield	CCC-505 CRP Reduction
CORN	17.2		154	0.0
SOYBEANS	17.2		46	0.0
Total Base Acres:	34.4			

Owners: JOHN E KMETZ

Other Producers: None



United States
Department of
Agriculture

La Salle County, Illinois



Common Land Unit

- Non-Cropland
- Cropland

Tract Boundary

0 180 360 720
Feet

2016 Program Year
Map Created December 28, 2015

Wetland Determination Identifiers

- Restricted Use
- Limited Restrictions
- Exempt from Conservation Compliance Provisions

Tract Cropland Total: 34.44 acres

Farm 8027
Tract 45059

United States Department of Agriculture (USDA) Farm Service Agency (FSA) maps are for FSA Program administration only. This map does not represent a legal survey or reflect actual ownership; rather it depicts the information provided directly from the producer and/or National Agricultural Imagery Program (NAIP) imagery. The producer accepts the data 'as is' and assumes all risks associated with its use. USDA-FSA assumes no responsibility for actual or consequential damage incurred as a result of any user's reliance on this data outside FSA Programs. Wetland identifiers do not represent the size, shape, or specific determination of the area. Refer to your original determination (CPA-026 and attached maps) for exact boundaries and determinations or contact USDA Natural Resources Conservation Service (NRCS).

Aerial Map

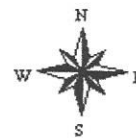


map center: 41° 8' 35.81, -88° 46' 8.69

0ft 846ft 1693ft

Maps Provided By:
surety
CUSTOMIZED ONLINE MAPPING
© AgriData, Inc. 2016 www.AgriDataInc.com

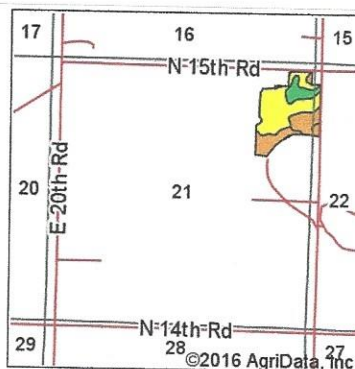
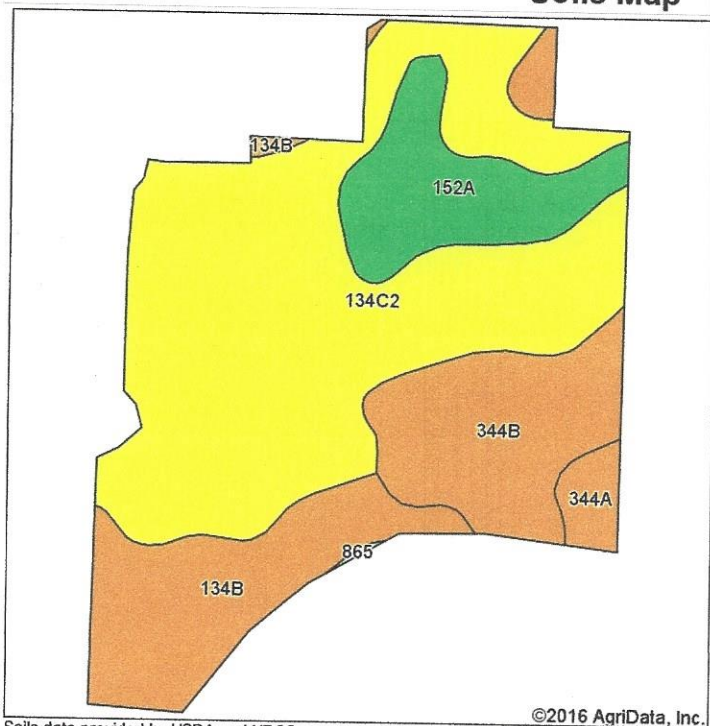
21-31N-4E
La Salle County
Illinois



11/11/2016

Field borders provided by Farm Service Agency as of 5/21/2008. Soils data provided by University of Illinois at Champaign-Urbana.

Soils Map



State: Illinois
 County: La Salle
 Location: 21-31N-4E
 Township: Otter Creek
 Acres: 34.44
 Date: 11/11/2016

Maps Provided By:
surety
 CUSTOMIZED ONLINE MAPPING
 © AgriData, Inc. 2016 www.AgriDataInc.com



Area Symbol: IL099, Soil Area Version: 10

Code	Soil Description	Acres	Percent of field	Il. State Productivity Index Legend	Subsoil rooting a	Corn Bu/A	Soybeans Bu/A	Wheat Bu/A	Oats Bu/A b	Sorghum c Bu/A	Alfalfa d hay, T/A	Grass-legume e hay, T/A	Crop productivity index for optimum management
**134C2	Camden silt loam, 5 to 10 percent slopes, eroded	18.76	54.5%		FAV	**154	**47	**60	**81	0	**4.44	0.00	**111
**344B	Harvard silt loam, 2 to 5 percent slopes	5.56	16.1%		FAV	**169	**53	**65	**87	0	**5.46	0.00	**124
**134B	Camden silt loam, 2 to 5 percent slopes	5.42	15.7%		FAV	**164	**50	**63	**86	0	**4.72	0.00	**118
152A	Drummer silty clay loam, 0 to 2 percent slopes	3.94	11.4%		FAV	195	63	73	100	0	0.00	5.64	144
344A	Harvard silt loam, 0 to 2 percent slopes	0.76	2.2%		FAV	171	54	66	88	0	5.52	0.00	125
Weighted Average						163.1	50.4	62.9	85.1	*-	4.16	0.65	118.3

Table: Optimum Crop Productivity Ratings for Illinois Soil by K.R. Olson and J.M. Lang, Office of Research, ACES, University of Illinois at Champaign-Urbana. Version: 1/2/2012 Amended Table S2 B811

Crop yields and productivity indices for optimum management (B811) are maintained at the following NRES web site:
<https://www.ideals.illinois.edu/handle/2142/1027/>

** Indexes adjusted for slope and erosion according to Bulletin 811 Table S3

a UNF = unfavorable; FAV = favorable

b Soils in the southern region were not rated for oats and are shown with a zero "0".

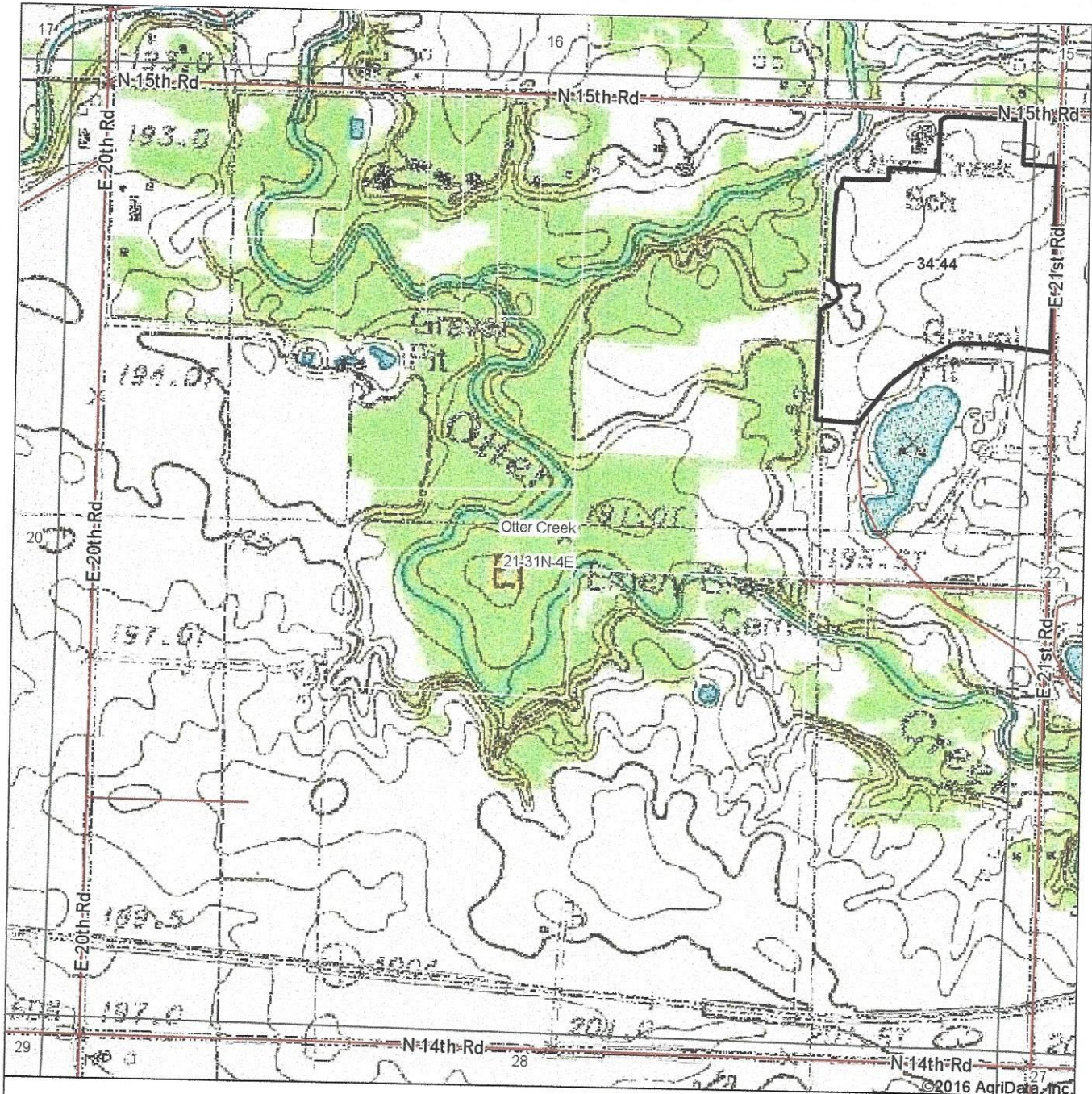
c Soils in the northern region or in both regions were not rated for grain sorghum and are shown with a zero "0".

d Soils in the poorly drained group were not rated for alfalfa and are shown with a zero "0".

e Soils in the well drained group were not rated for grass-legume and are shown with a zero "0".

*c: Using Capabilities Class Dominant Condition Aggregation Method

Topography Map

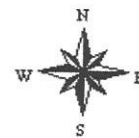


map center: 41° 8' 35.81, -88° 46' 8.69

0ft 846ft 1693ft

21-31N-4E
La Salle County
Illinois

Maps Provided By:
surety
CUSTOMIZED ONLINE MAPPING
© AgriData, Inc. 2016 www.AgriDataInc.com



11/11/2016

Field borders provided by Farm Service Agency as of 5/21/2008. Soils data provided by University of Illinois at Champaign-Urbana.