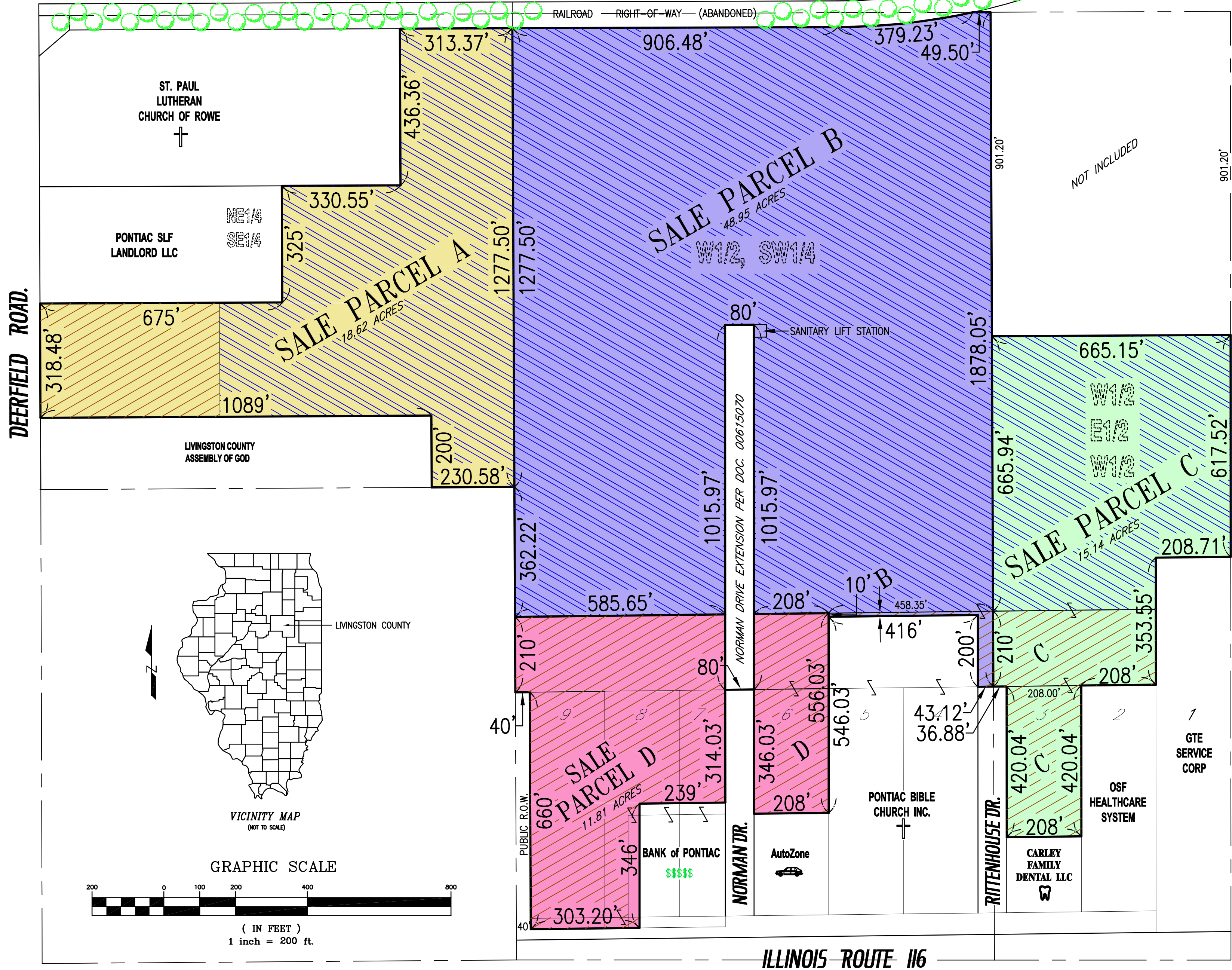
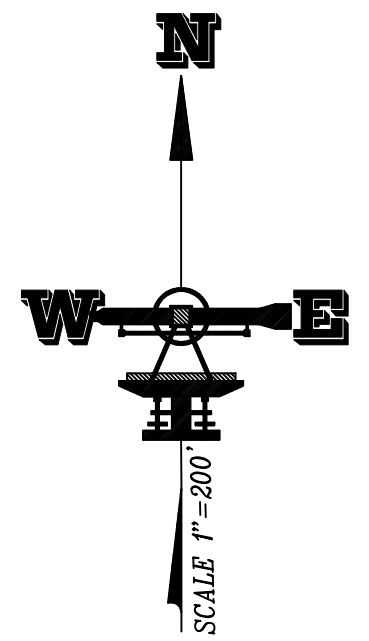


EXHIBIT

PONTIAC, LIVINGSTON COUNTY, ILLINOIS

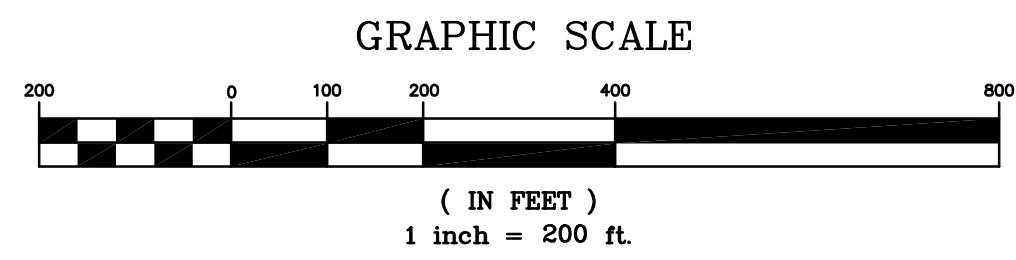


- SALE PARCEL A 18.62 ACRES
811087.2 sq. ft.
- SALE PARCEL B 48.95 ACRES
2132281.7 sq. ft.
- SALE PARCEL C 15.14 ACRES
659356.4 sq. ft.
- SALE PARCEL D 11.81 ACRES
514580.2 sq. ft.

- ZONED B-3
- ZONED R-4
- TREES



VICINITY MAP
(NOT TO SCALE)



KRAUSE SURVEYING INC.

ILLINOIS PROFESSIONAL DESIGN FIRM #184-004647

"SERVING ILLINOIS LANDOWNERS FOR OVER 60 YEARS"

115 WEST HACK ST. - P.O. BOX 336 - CULLOM, IL 60929
PHONE (815) 676-0999 ~ FAX (815) 676-4999

© KRAUSE SURVEYING INC. - ALL RIGHTS RESERVED

DISTANCES ARE MARKED IN FEET AND DECIMALS
ORDER NO.: 190110_EXHIBIT
ORDERED BY: BLAKEMAN & SCHROCK LTD.