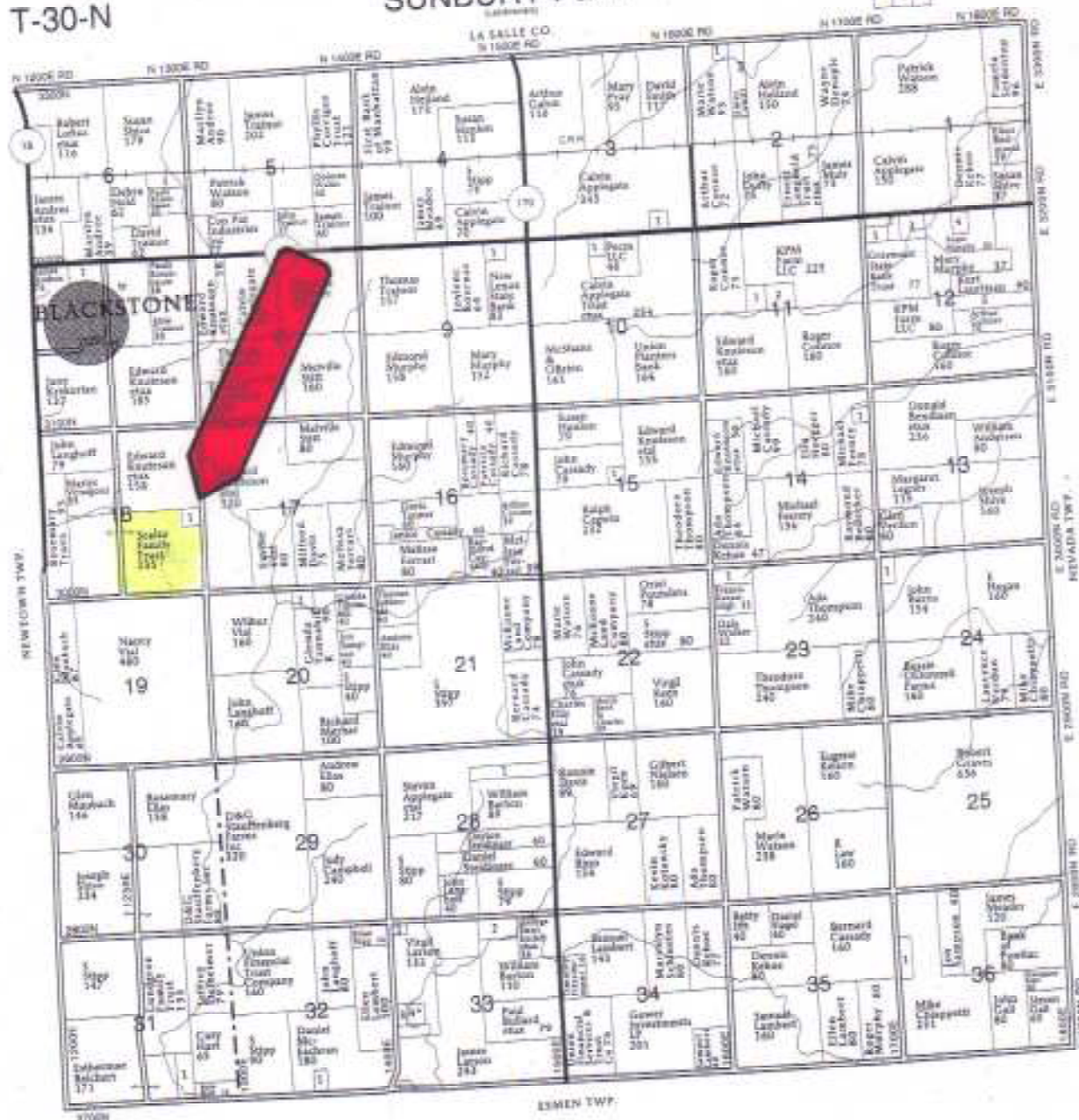
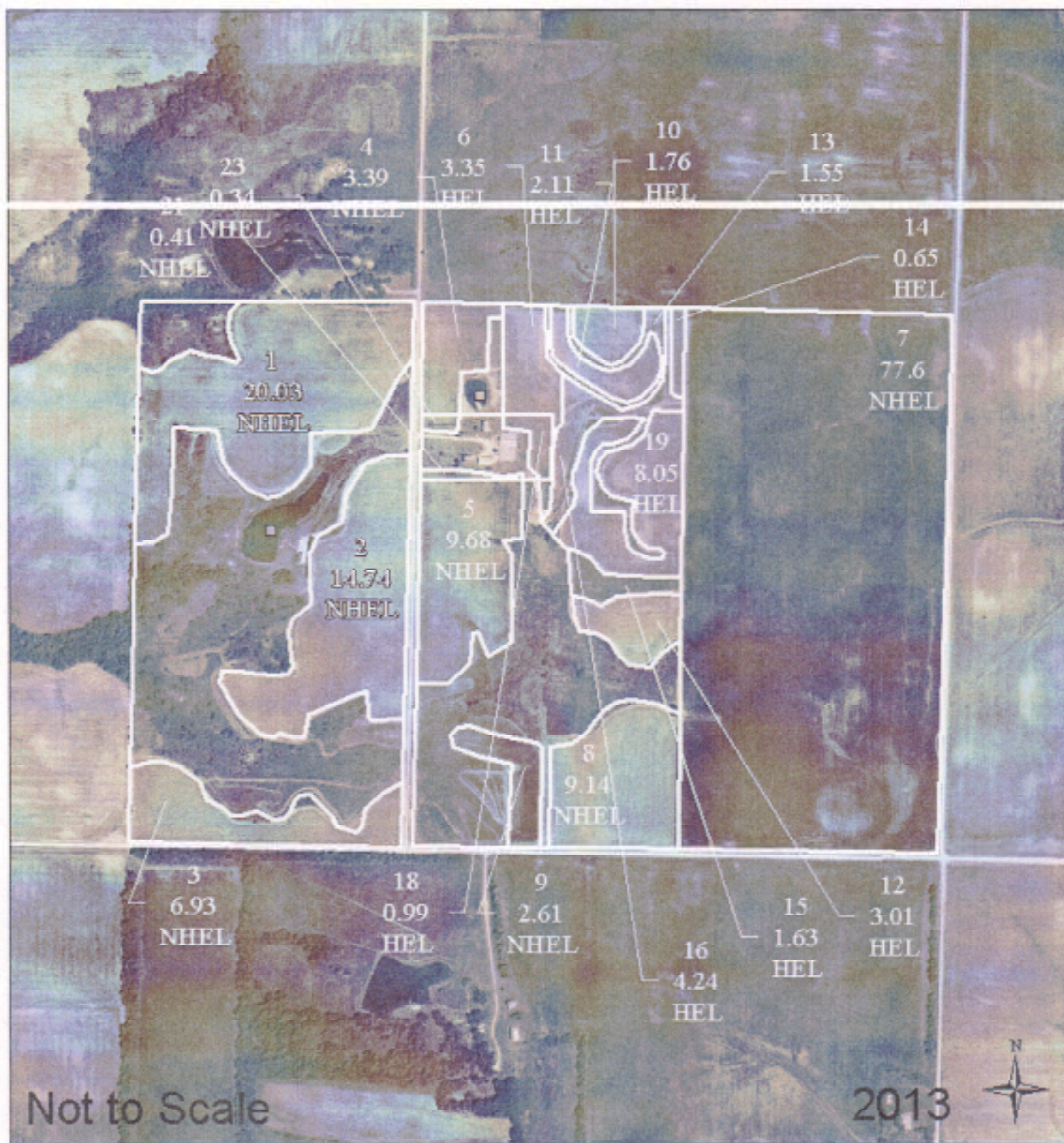


R-5-E





United States Department of Agriculture
Farm Service Agency

February 14, 2013

Farm: 3562

Tract: 479

Livingston County

Disclaimer: Wetland Identifiers do not represent the size, shape or specific determination of the area. Refer to your original determination (CPA-02B and attached maps) for exact wetland boundaries and determinations, or contact NRCS.

gls_8_SCE Wet_P_0103

Wetland Determination Identifiers

- Restricted Use
- ▽ Limited Herbaceous
- Exemption Code Matrix Compliance Features

The FSA information provided is for the entire farm of 235 acres that includes the 155 acres being sold.

The FSA can't split the 155 acres out as it is under one farm number.

Illinois
Livingston

U.S. Department of Agriculture
Farm Service Agency
Abbreviated 156 Farm Record

FARM: 3562

Prepared: 11/25/13 8:24 AM

Crop Year: 2014

Page: 1 of 1

Report ID: FSA-156EZ

DISCLAIMER: This is data extracted from the web farm database. Because of potential messaging failures in MIDAS, this data is not guaranteed to be an accurate and complete representation of data contained in the MIDAS system, which is the system of record for Farm Records.

| Operator Name | Farm Identifier | Recon Number |
|---------------|-----------------|--------------|
| CARL STIPP | Not Applicable | |

Farms Associated with Operator:
6148

CRP Contract Number(s): None

| Farmland | Cropland | DCP Cropland | WBP | WRP/EWP | CRP Cropland | GRP | Farm Status | Number of Tracts |
|--------------------|--------------------|------------------------|----------------|---------|--------------|-----|----------------|------------------|
| 235.33 | 172.21 | 172.21 | 0.0 | 0.0 | 0.0 | 0.0 | Active | 1 |
| State Conservation | Other Conservation | Effective DCP Cropland | Double Cropped | MPL/FWP | | | FAV/WR History | |
| 0.0 | 0.0 | 172.21 | 0.0 | 0.0 | | | N | |

| Crop | Base Acreage | Direct Yield | CC Yield | CCC-505 CRP Reduction | PTPP Reduction |
|-------------------|--------------|--------------|----------|-----------------------|----------------|
| WHEAT | 13.0 | 48 | 48 | 0.0 | 0.0 |
| CORN | 91.9 | 103 | 103 | 0.0 | 0.0 |
| SOYBEANS | 58.1 | 29 | 29 | 0.0 | 0.0 |
| Total Base Acres: | 163.0 | | | | |

Tract Number: 479 Description: G 2 1A SEC 18 SUNBURY TWP

BIA Range Unit Number:

HEL Status: HEL: conservation system is being actively applied

Wetland Status: Tract contains a wetland or farmed wetland

WL Violations: None

FAV/WR History
N

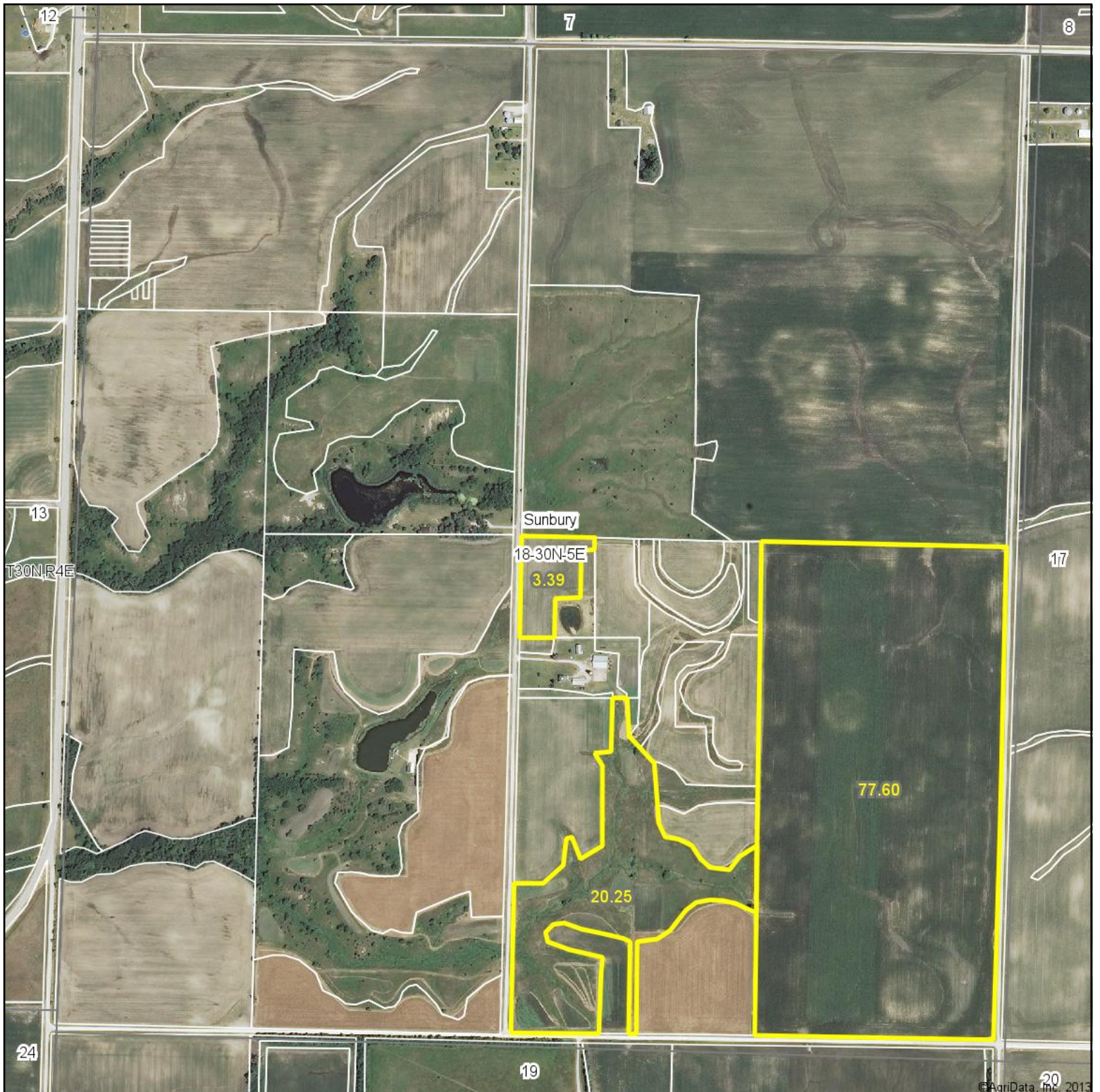
| Farmland | Cropland | DCP Cropland | WBP | WRP/EWP | CRP Cropland | GRP |
|--------------------|--------------------|------------------------|----------------|---------|--------------|-----|
| 235.33 | 172.21 | 172.21 | 0.0 | 0.0 | 0.0 | 0.0 |
| State Conservation | Other Conservation | Effective DCP Cropland | Double Cropped | MPL/FWP | | |
| 0.0 | 0.0 | 172.21 | 0.0 | 0.0 | | |

| Crop | Base Acreage | Direct Yield | CC Yield | CCC-505 CRP Reduction | PTPP Reduction |
|-------------------|--------------|--------------|----------|-----------------------|----------------|
| WHEAT | 13.0 | 48 | 48 | 0.0 | 0.0 |
| CORN | 91.9 | 103 | 103 | 0.0 | 0.0 |
| SOYBEANS | 58.1 | 29 | 29 | 0.0 | 0.0 |
| Total Base Acres: | 163.0 | | | | |

OWNERS: ANTHONY SCALZO

Other Producers: None

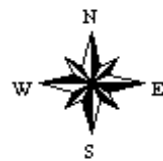
Aerial Map



map center: 41° 4' 11.63, 88° 41' 24.42

scale: 9527

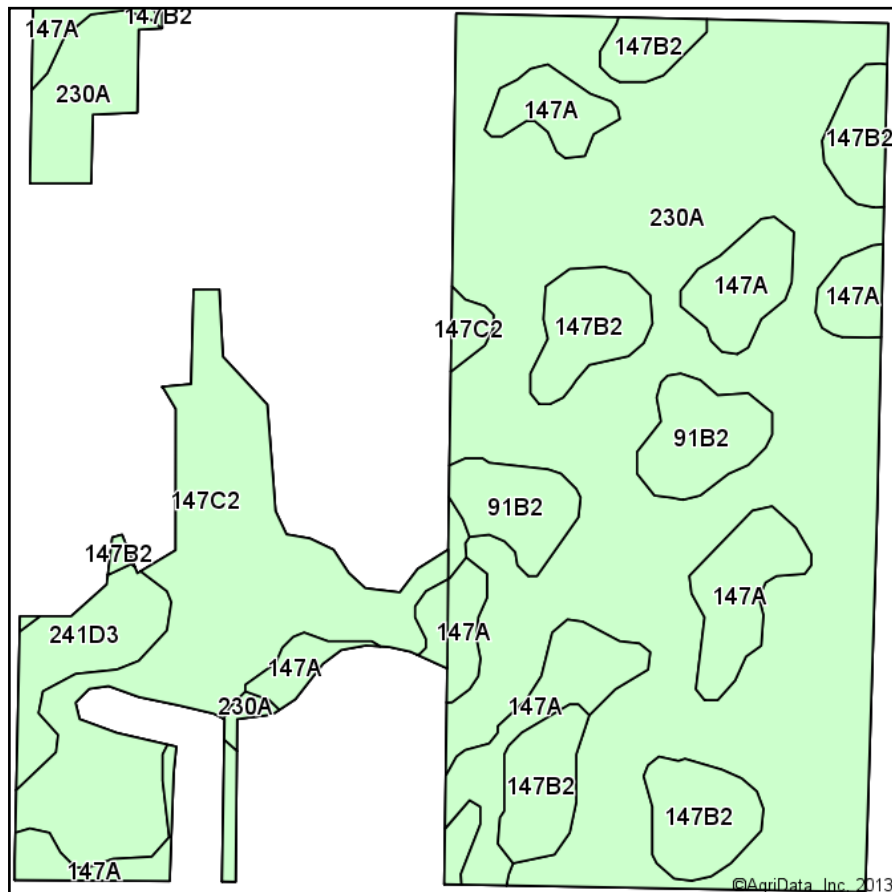
18-30N-5E
Livingston County
Illinois



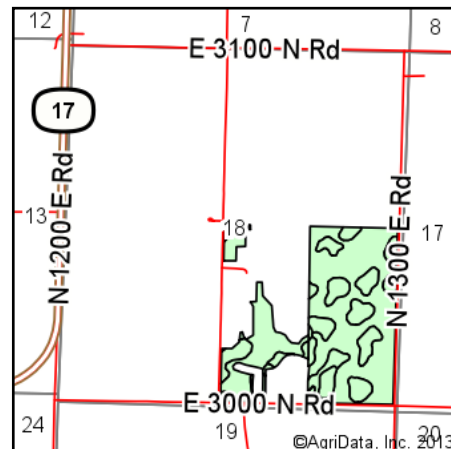
11/25/2013

Maps Provided By:
 **surety**
CUSTOMIZED ONLINE MAPPING
© AgriData, Inc. 2013 www.AgriDataInc.com

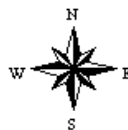
Soil Map



Soils data provided by USDA and NRCS.



State: **Illinois**
 County: **Livingston**
 Location: **18-30N-5E**
 Township: **Sunbury**
 Acres: **101.24**
 Date: **11/25/2013**

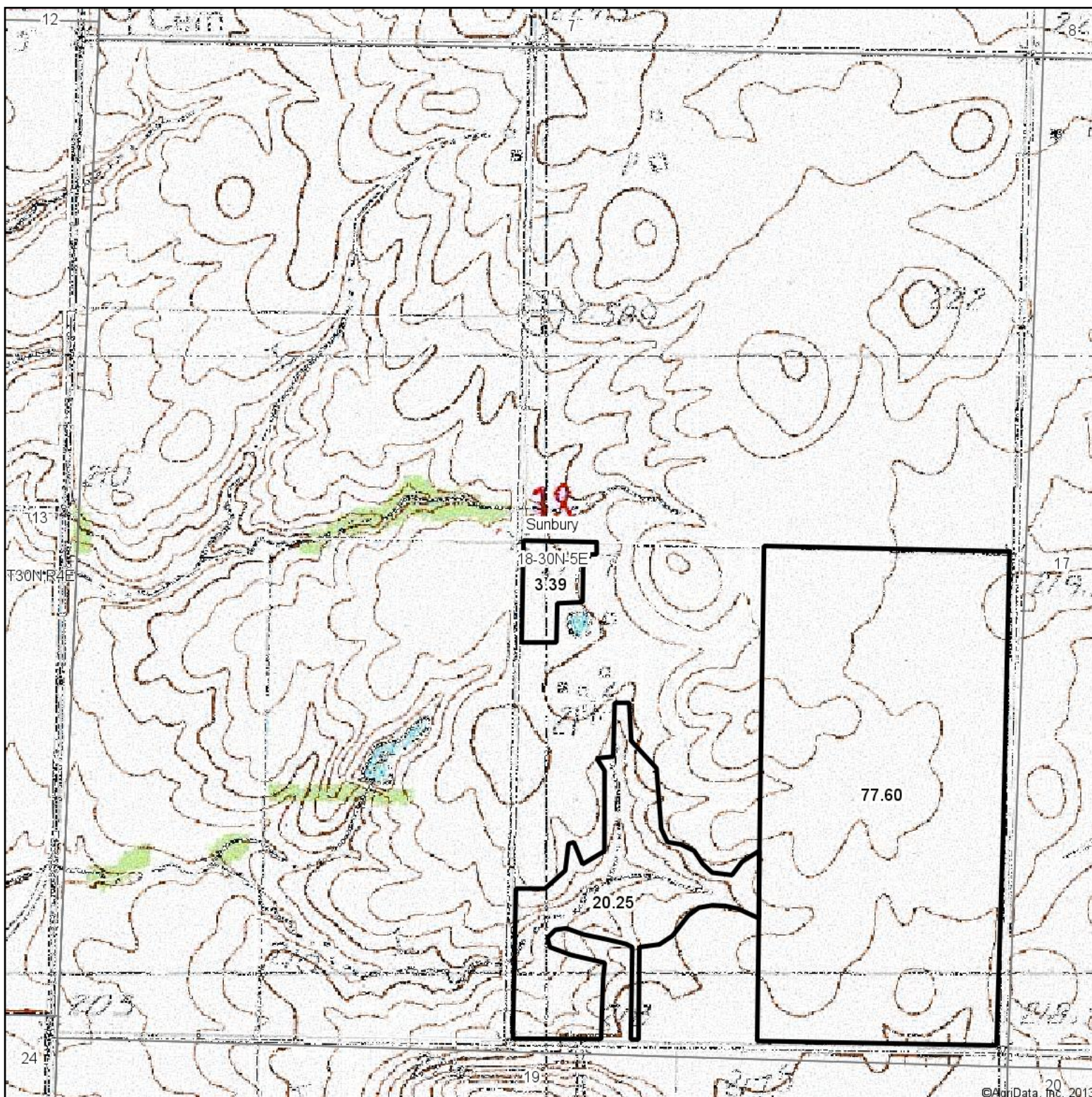


Maps Provided By:

 CUSTOMIZED ONLINE MAPPING
 © AgriData, Inc. 2013 www.AgriDataInc.com

| Code | Soil Description | Acres | Percent of field | Non-Irr Class | Corn | Grass legume hay | Grass legume pasture | Oats | Soybeans | Winter wheat |
|------------------|--|-------|------------------|---------------|-------|------------------|----------------------|------|----------|--------------|
| 230A | Rowe silty clay loam, 0 to 2 percent slopes | 55.75 | 55.1% | IIIw | 148 | 4.3 | 5.7 | 70 | 49 | 59 |
| 147C2 | Clarence silty clay loam, 4 to 6 percent slopes, eroded | 14.99 | 14.8% | IIIe | 129 | 4 | 5.2 | 60 | 45 | 54 |
| 147A | Clarence silty clay loam, 0 to 2 percent slopes | 14.02 | 13.8% | IIIs | 140 | 4.4 | 5.8 | 65 | 49 | 59 |
| 147B2 | Clarence silty clay loam, 2 to 4 percent slopes, eroded | 9.19 | 9.1% | IIIs | 130 | 4.1 | 5.3 | 60 | 46 | 55 |
| 91B2 | Swygert silty clay loam, 2 to 4 percent slopes, eroded | 4.43 | 4.4% | Ile | 147 | 4.2 | 5.5 | 73 | 48 | 59 |
| 241D3 | Chatsworth silty clay, 6 to 12 percent slopes, severely eroded | 2.86 | 2.8% | Vle | | 2.4 | 3 | | | |
| Weighted Average | | | | | 138.2 | 4.2 | 5.5 | 65.1 | 46.7 | 56.2 |

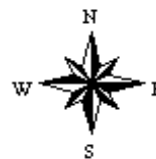
Field borders provided by Farm Service Agency as of 5/21/2008. Aerial photography provided by Aerial Photography Field Office.



map center: 41° 4' 11.63, 88° 41' 24.42

scale: 9499

18-30N-5E
Livingston County
Illinois



11/25/2013

Maps Provided By:



© AgriData, Inc. 2013 www.AgrIDataInc.com