

Illinois
LaSalle

U.S. Department of Agriculture
Farm Service Agency
Abbreviated 156 Farm Record

FARM: 10642
Prepared: 7/26/13 2:34 PM
Crop Year: 2013
Page: 1 of 1

Report ID: FSA-156EZ

DISCLAIMER: This is data extracted from the web farm database. Because of potential messaging failures in MIDAS, this data is not guaranteed to be an accurate and complete representation of data contained in the MIDAS system, which is the system of record for Farm Records.

Operator Name	Farm Identifier	Recon Number
CHARLES D TUTKO	Not Applicable	2008 17099 20

Farms Associated with Operator:
3197, 3383, 4584, 7973, 8635

CRP Contract Number(s): 1081A , 2669

Farmland	Cropland	DCP Cropland	WBP	WRP/EWP	CRP Cropland	GRP	Farm Status	Number of Tracts
77.79	77.02	77.02	0.0	0.0	7.8	0.0	Active	1
State Conservation	Other Conservation	Effective DCP Cropland	Double Cropped	MPL/FWP			FAV/WR History	ACRE Contract
0.0	0.0	69.22	0.0	0.0			N	None

Crop	Base Acreage	Direct Yield	CC Yield	CCC-505 CRP Reduction	PTPP Reduction
CORN	50.2	126	126	0.0	0.0
SOYBEANS	18.4	44	44	0.0	0.0
Total Base Acres:	68.6				

Tract Number: 46746 Description: M17-NE1/4NE1/4Sec27T31NR4E

BIA Range Unit Number:

HEL Status: NHEL: no agricultural commodity planted on undetermined fields

Wetland Status: Tract does not contain a wetland

WL Violations: None

FAV/WR History
N

Farmland	Cropland	DCP Cropland	WBP	WRP/EWP	CRP Cropland	GRP
77.79	77.02	77.02	0.0	0.0	7.8	0.0
State Conservation	Other Conservation	Effective DCP Cropland	Double Cropped	MPL/FWP		
0.0	0.0	69.22	0.0	0.0		

Crop	Base Acreage	Direct Yield	CC Yield	CCC-505 CRP Reduction	PTPP Reduction
CORN	50.2	126	126	0.0	0.0
SOYBEANS	18.4	44	44	0.0	0.0
Total Base Acres:	68.6				

Owners: STATE BANK OF GRAYMONT

Other Producers: None

Soil Map—La Salle County, Illinois



Natural Resources
Conservation Service

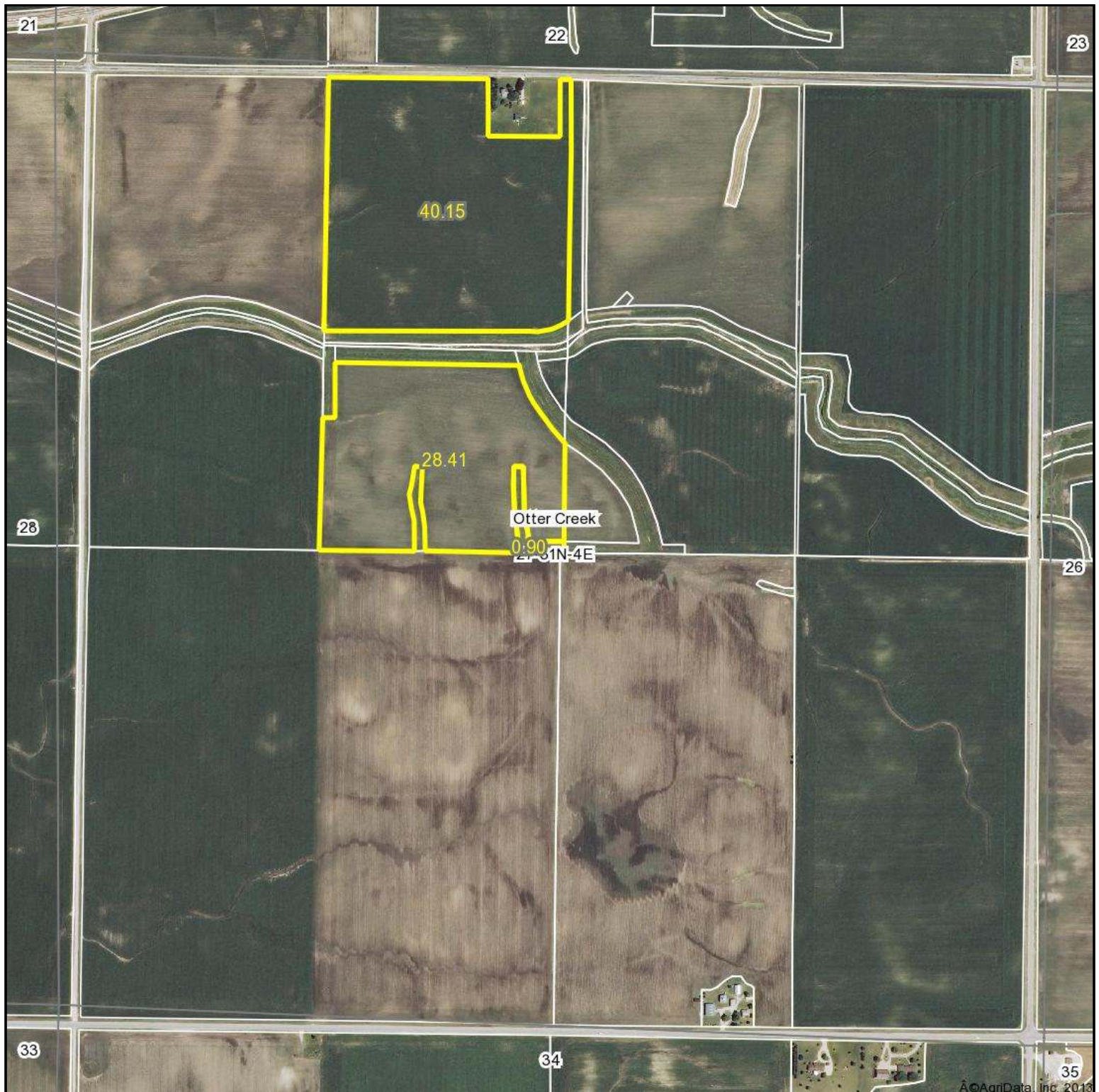
Web Soil Survey
National Cooperative Soil Survey

8/7/2013
Page 1 of 3

Map Unit Legend

La Salle County, Illinois (IL099)			
Map Unit Symbol	Map Unit Name	Acres in AOI	Percent of AOI
91B	Swygert silty clay loam, 2 to 4 percent slopes	4.6	6.0%
235A	Bryce silty clay, 0 to 2 percent slopes	0.1	0.1%
295A	Mokena silt loam, 0 to 2 percent slopes	0.0	0.0%
295B	Mokena silt loam, 2 to 4 percent slopes	20.2	26.2%
375B	Rutland silty clay loam, 2 to 5 percent slopes	7.8	10.1%
435A	Streator silty clay loam, 0 to 2 percent slopes	42.7	55.3%
679B	Blackberry silt loam, 2 to 5 percent slopes	1.8	2.3%
Totals for Area of Interest		77.1	100.0%

Aerial Map



©AgriData, Inc. 2013

map center: 41° 7' 42.88, 88° 44' 58.52

scale: 10466

27-31N-4E
La Salle County
Illinois



8/12/2013

Maps provided by:

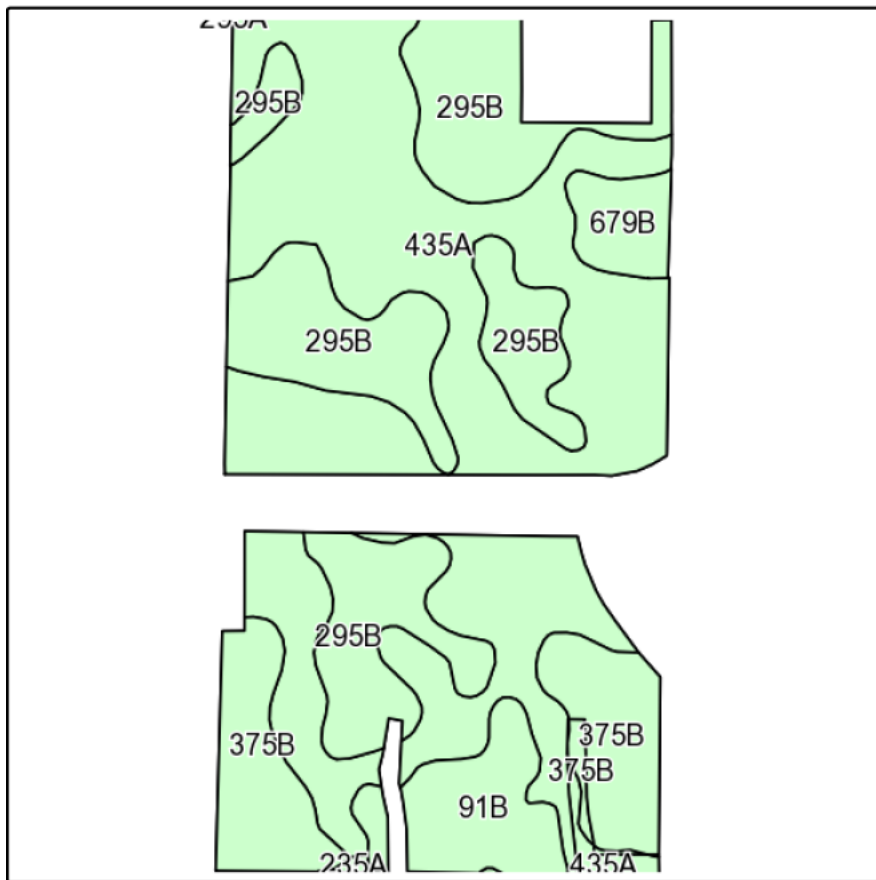


©AgriData, Inc. 2012

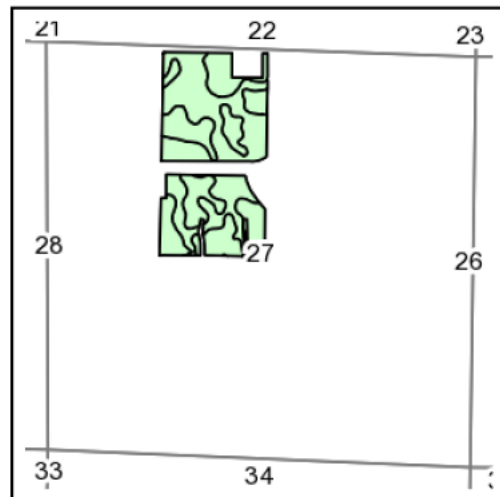
www.AgriDataInc.com

Field borders provided by Farm Service Agency as of 5/21/2008. Aerial photography provided by Aerial Photography Field Office.

Soils Map



Field borders provided by Farm Service Agency as of 5/21/2008.
Soils data provided by USDA and NRCS.



State: **Illinois**
County: **La Salle**
Location: **27-31N-4E**
Township: **Otter Creek**
Acres: **69.5**
Date: **8/12/2013**



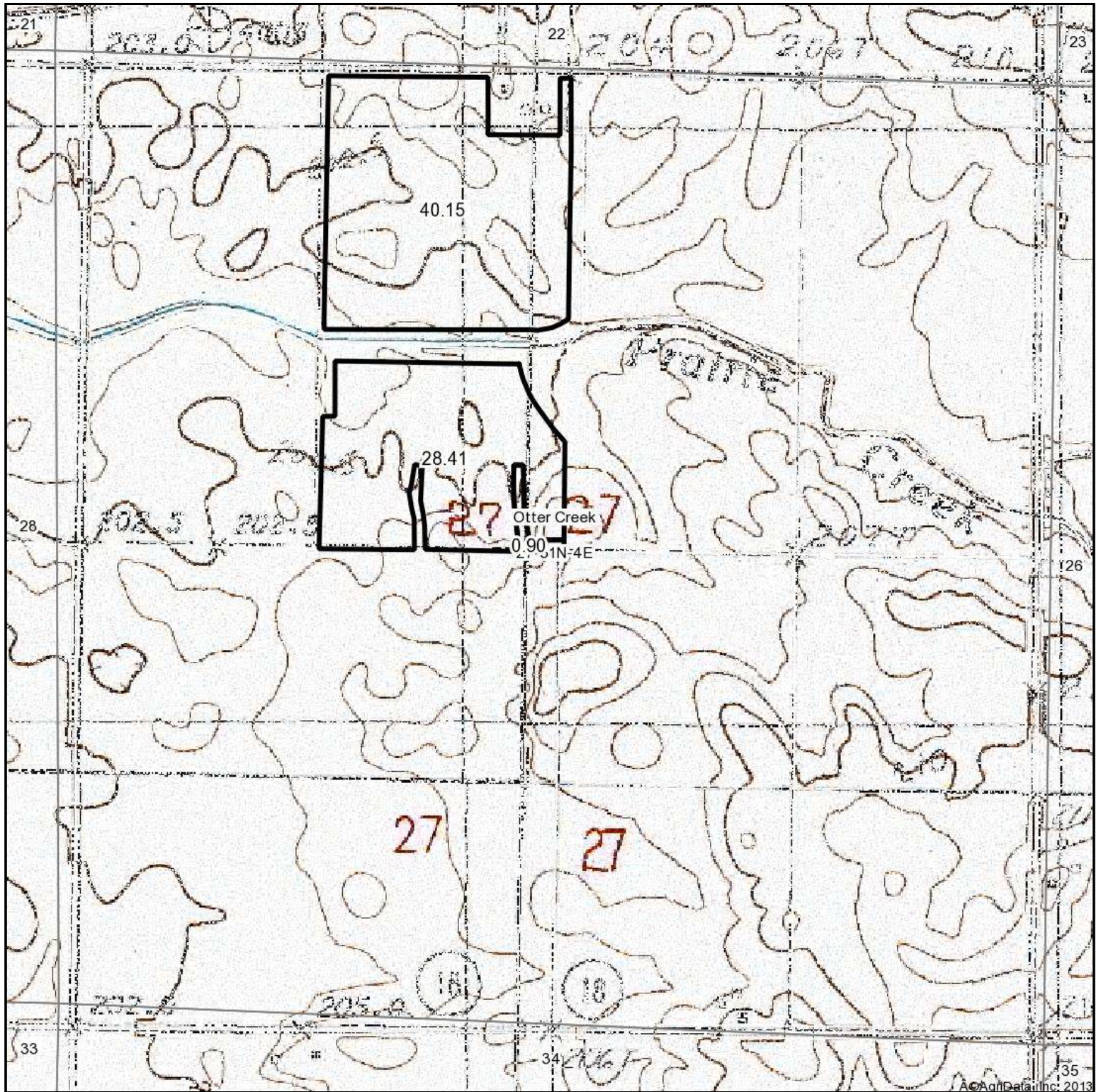
Maps provided by:



©AgriData, Inc 2013
www.AgriDataInc.com

Code	Soil Description	Acres	Percent of field	Non-Irr Class	Corn	Grass legume hay	Grass legume pasture	Oats	Soybeans	Winter wheat
435A	Streator silty clay loam, 0 to 2 percent slopes	35.8	51.5%	Illw	177	5.1	6.8	92	58	69
295B	Mokena silt loam, 2 to 4 percent slopes	19	27.3%	Ile	153	4.4	6.4	78	49	59
375B	Rutland silty clay loam, 2 to 5 percent slopes	8.1	11.7%	Ile	178	5.5	7.3	96	57	70
91B	Swygert silty clay loam, 2 to 4 percent slopes	4.5	6.4%	Ile	156	4.5	5.9	78	51	62
679B	Blackberry silt loam, 2 to 5 percent slopes	2	2.9%	Ile	173	6.3	9.2	92.1	53	66
235A	Bryce silty clay, 0 to 2 percent slopes	0.1	0.1%	Illw	162	4.8	6.3	82	54	64
Weighted Average					168.9	4.9	6.8	87.7	54.8	65.8

Topography Map



map center: 41° 7' 42.88, 88° 44' 58.52

scale: 10466

Maps provided by:



©AgriData, Inc. 2012

www.AgriDataInc.com

27-31N-4E
La Salle County
Illinois



8/12/2013

Field borders provided by Farm Service Agency as of 5/21/2008. Aerial photography provided by Aerial Photography Field Office.