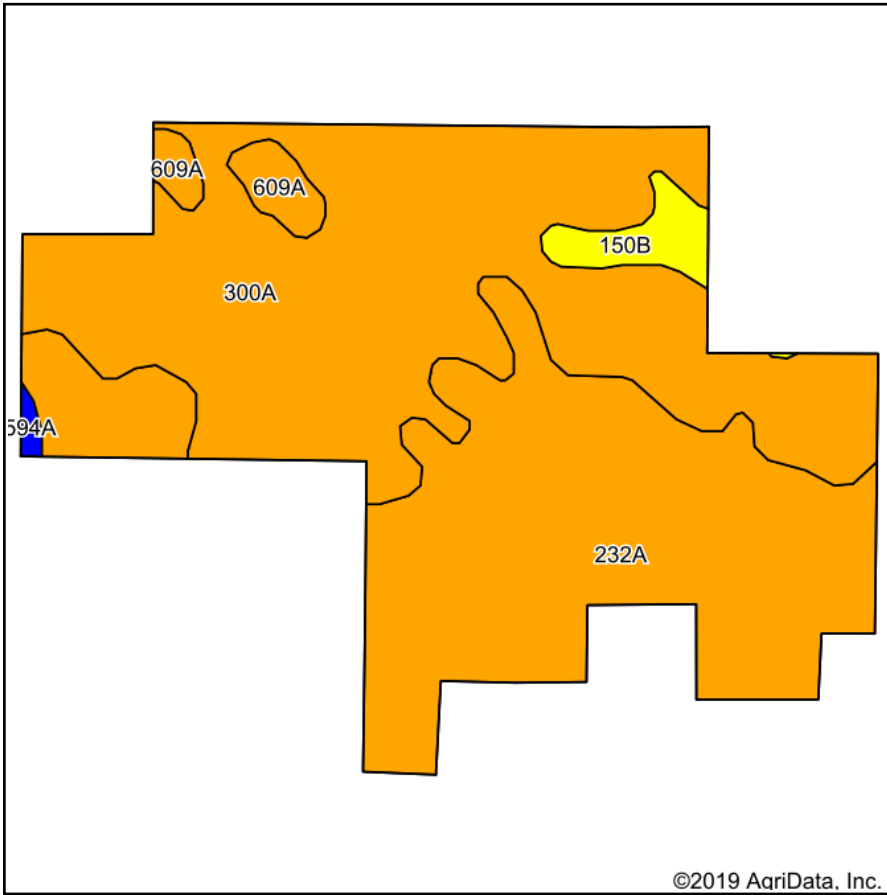
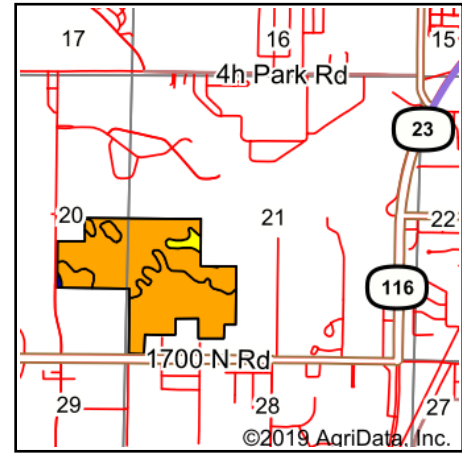


# Soils Map



Soils data provided by USDA and NRCS.



State: **Illinois**  
 County: **Livingston**  
 Location: **21-28N-5E**  
 Township: **Pontiac**  
 Acres: **118.24**  
 Date: **3/1/2019**

Maps Provided By:  
  
 CUSTOMIZED ONLINE MAPPING  
 © AgriData, Inc. 2019 www.AgridataInc.com



**Area Symbol: IL105, Soil Area Version: 13**

Code	Soil Description	Acres	Percent of field	Il. State Productivity Index Legend	Subsoil rooting <sup>a</sup>	Corn Bu/A	Soybeans Bu/A	Wheat Bu/A	Oats Bu/A <sup>b</sup>	Sorghum <sup>c</sup> Bu/A	Alfalfa <sup>d</sup> hay, T/A	Grass-legume <sup>e</sup> hay, T/A	Crop productivity index for optimum management
300A	Westland clay loam, 0 to 2 percent slopes	60.22	50.9%		FAV	164	53	63	84	0	0.00	4.77	121
232A	Ashkum silty clay loam, 0 to 2 percent slopes	51.66	43.7%		FAV	170	56	65	85	0	0.00	5.14	127
**150B	Onarga fine sandy loam, 2 to 5 percent slopes	3.07	2.6%		FAV	**147	**48	**60	**76	0	**4.10	0.00	**109
609A	Crane loam, 0 to 2 percent slopes	2.89	2.4%		FAV	169	53	66	87	0	0.00	5.27	124
594A	Reddick clay loam, 0 to 2 percent slopes	0.40	0.3%		FAV	177	56	66	89	0	0.00	5.14	130
<b>Weighted Average</b>						<b>166.3</b>	<b>54.2</b>	<b>63.9</b>	<b>84.3</b>	<b>*-</b>	<b>0.11</b>	<b>4.82</b>	<b>123.4</b>

**Table: Optimum Crop Productivity Ratings for Illinois Soil by K.R. Olson and J.M. Lang, Office of Research, ACES, University of Illinois at Champaign-Urbana.** Version: 1/2/2012 Amended Table S2 B811

Crop yields and productivity indices for optimum management (B811) are maintained at the following NRES web site: <http://soilproductivity.nres.illinois.edu/>

\*\* Indexes adjusted for slope and erosion according to Bulletin 811 Table S3

**a** UNF = unfavorable; FAV = favorable

**b** Soils in the southern region were not rated for oats and are shown with a zero "0".

**c** Soils in the northern region or in both regions were not rated for grain sorghum and are shown with a zero "0".

**d** Soils in the poorly drained group were not rated for alfalfa and are shown with a zero "0".

**e** Soils in the well drained group were not rated for grass-legume and are shown with a zero "0".

\*c: Using Capabilities Class Dominant Condition Aggregation Method

Soils data provided by USDA and NRCS. Soils data provided by University of Illinois at Champaign-Urbana.