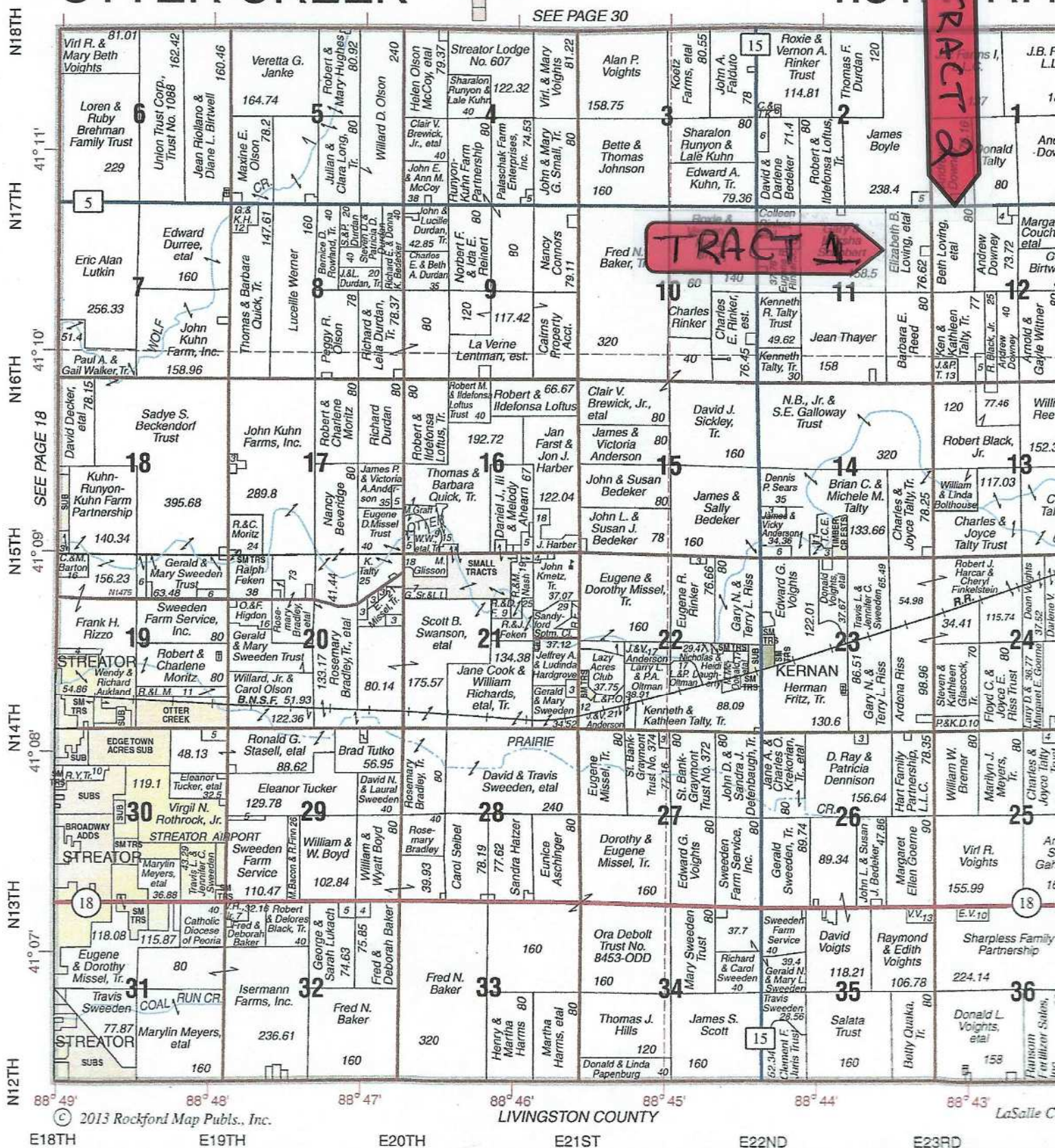
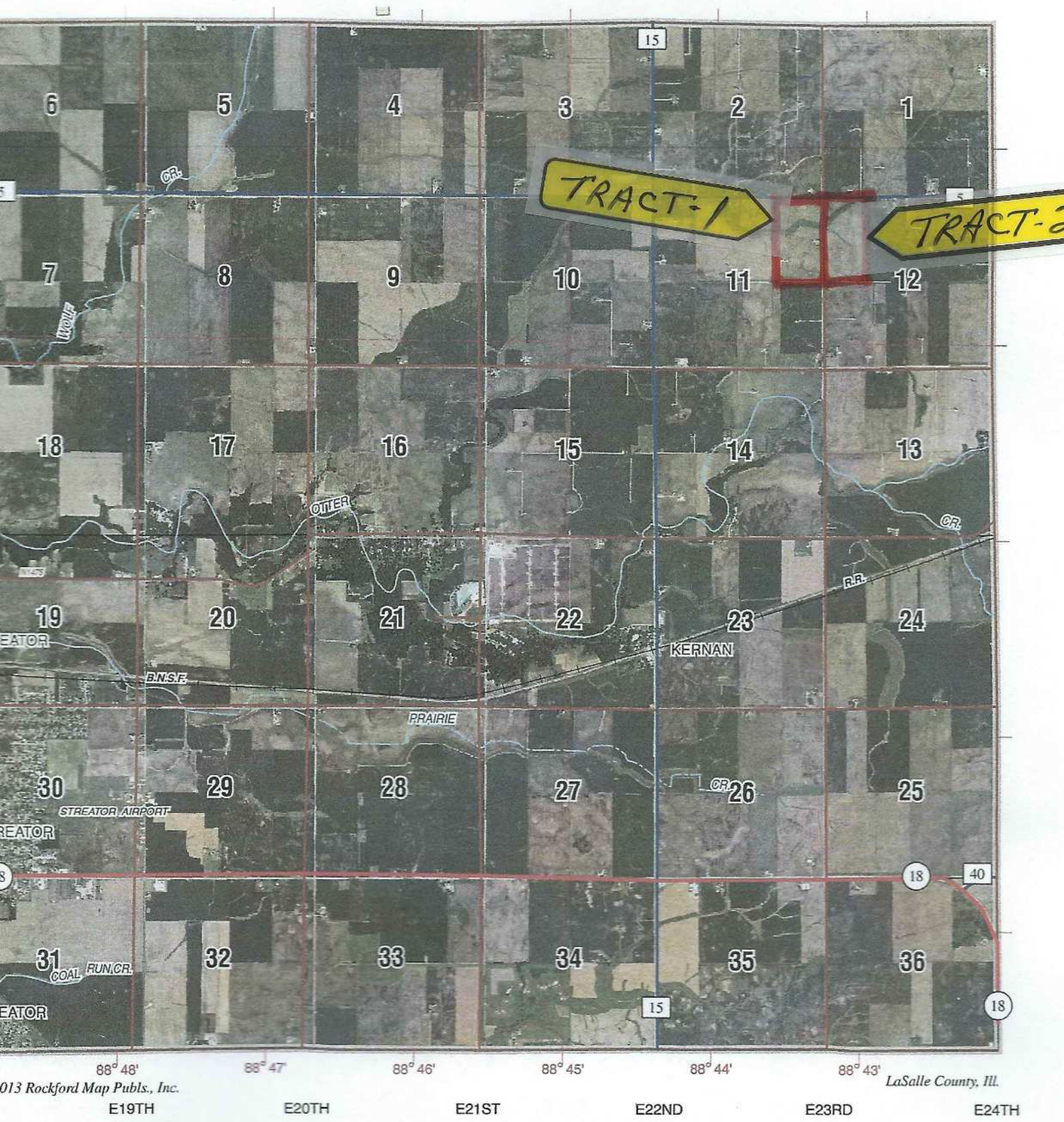


T.31  R.4

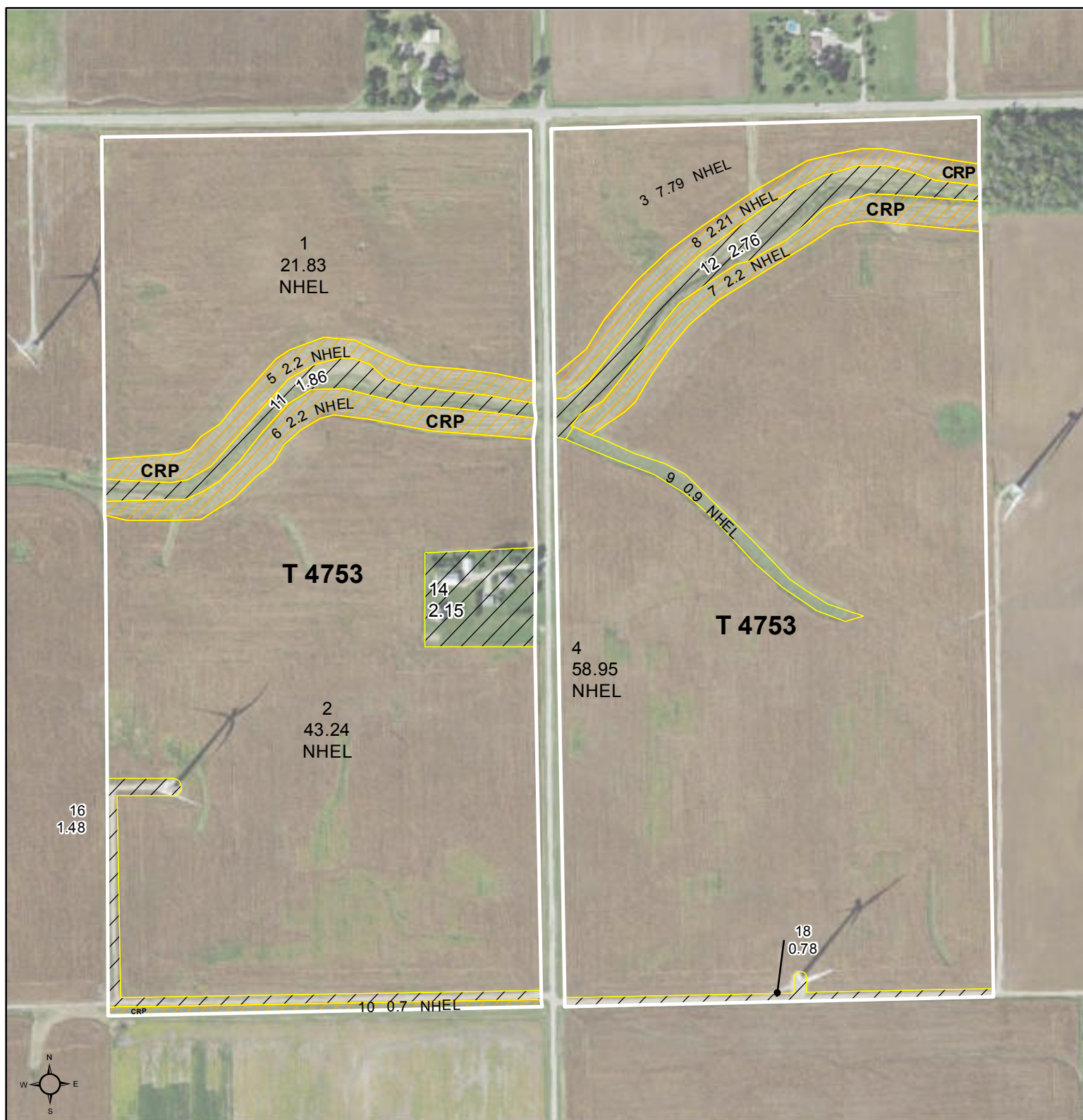






United States
Department of
Agriculture

La Salle County, Illinois



Common Land Unit

- CRP
- Non-Cropland
- Cropland

Wetland Determination Identifiers

- Restricted Use
- Limited Restrictions
- Exempt from Conservation Compliance Provisions

0 180 360 720
Feet

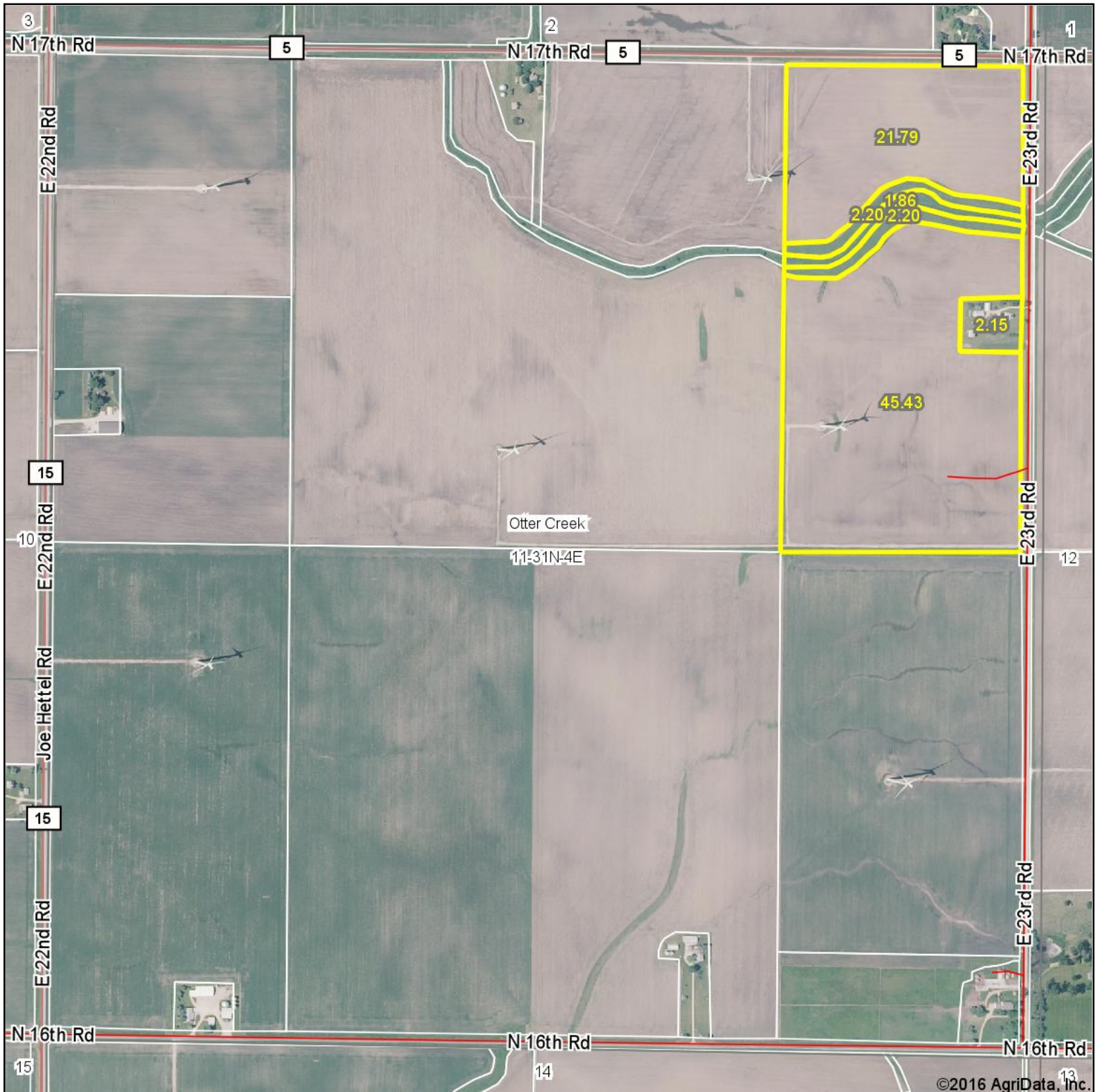
2016 Program Year
Map Created December 28, 2015

Farm **3227**
Tract **4753**

Tract Cropland Total: 142.22 acres

United States Department of Agriculture (USDA) Farm Service Agency (FSA) maps are for FSA Program administration only. This map does not represent a legal survey or reflect actual ownership; rather it depicts the information provided directly from the producer and/or National Agricultural Imagery Program (NAIP) imagery. The producer accepts the data 'as is' and assumes all risks associated with its use. USDA-FSA assumes no responsibility for actual or consequential damage incurred as a result of any user's reliance on this data outside FSA Programs. Wetland identifiers do not represent the size, shape, or specific determination of the area. Refer to your original determination (CPA-026 and attached maps) for exact boundaries and determinations or contact USDA Natural Resources Conservation Service (NRCS).

Aerial Map

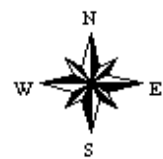


map center: 41° 10' 19.46, 88° 43' 50.9

0ft 830ft 1660ft

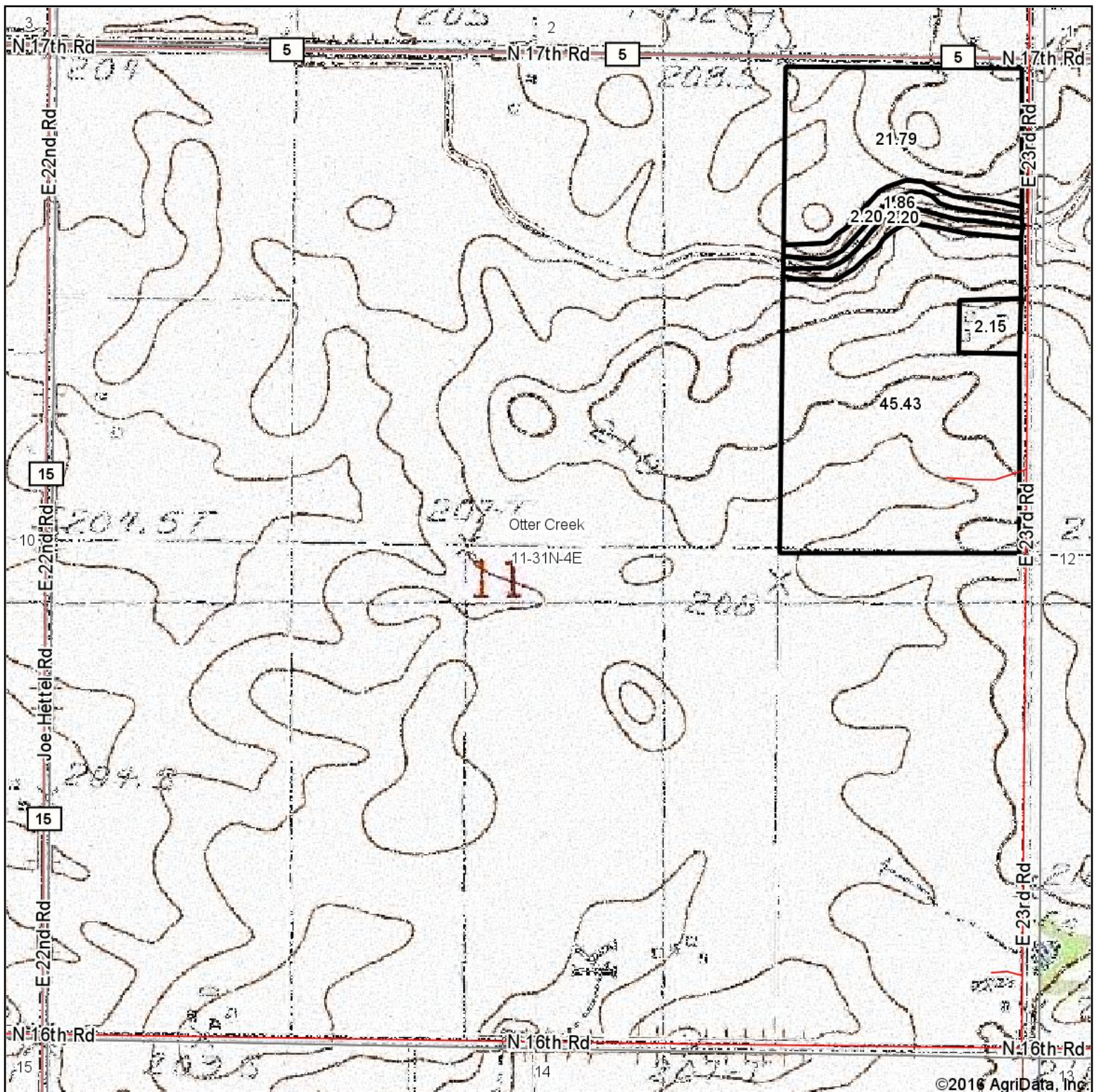
Maps Provided By:
surety
CUSTOMIZED ONLINE MAPPING
© AgriData, Inc. 2016 www.AgriDataInc.com

11-31N-4E
La Salle County
Illinois



2/9/2016

Topography Map

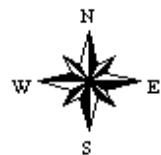


map center: 41° 10' 19.46, 88° 43' 50.9

0ft 830ft 1660ft

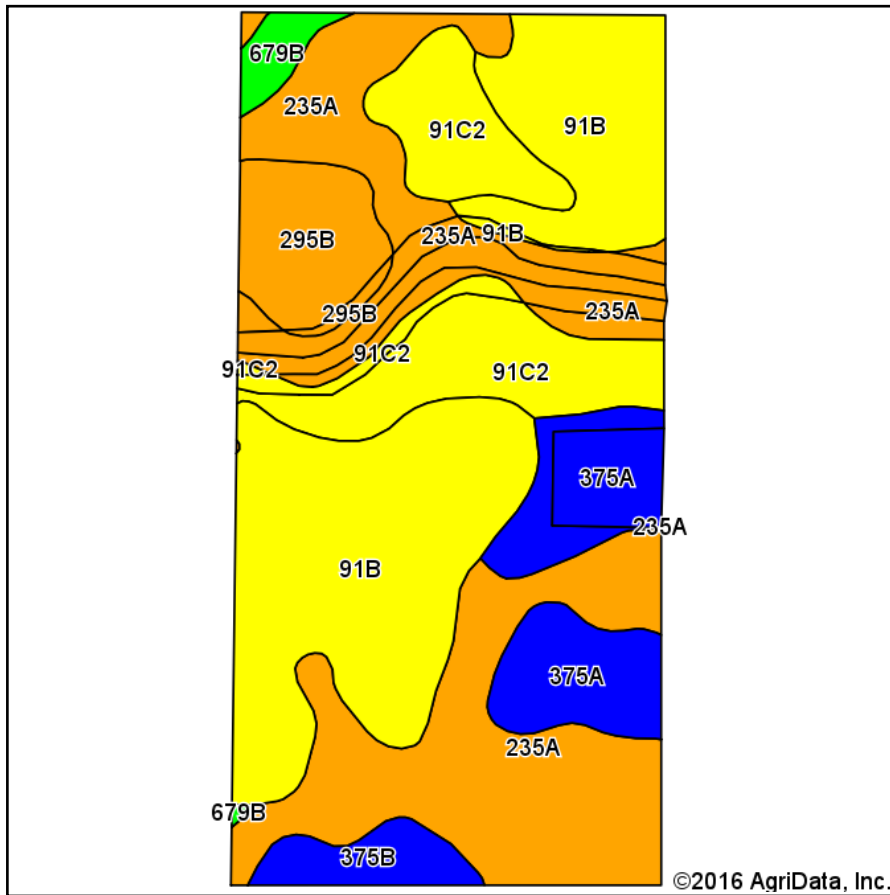
11-31N-4E
La Salle County
Illinois

Maps Provided By:
 **surety**
CUSTOMIZED ONLINE MAPPING
© AgriData, Inc. 2016 www.AgriDataInc.com

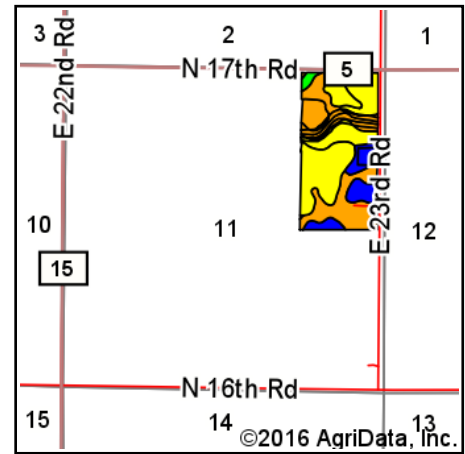


2/9/2016

Soils Map



Soils data provided by USDA and NRCS.



State: **Illinois**
 County: **La Salle**
 Location: **11-31N-4E**
 Township: **Otter Creek**
 Acres: **75.63**
 Date: **2/9/2016**



Area Symbol: IL099, Soil Area Version: 10

Code	Soil Description	Acres	Percent of field	Il. State Productivity Index Legend	Subsoil rooting ^a	Corn Bu/A	Soybeans Bu/A	Wheat Bu/A	Oats Bu/A ^b	Sorghum ^c Bu/A	Alfalfa ^d hay, T/A	Grass-legume ^e hay, T/A	Crop productivity index for optimum management
235A	Bryce silty clay, 0 to 2 percent slopes	25.33	33.5%		FAV	162	54	64	82	0	0.00	4.77	121
**91B	Swygert silty clay loam, 2 to 4 percent slopes	23.90	31.6%		UNF	**156	**51	**62	**78	0	0.00	**4.47	**117
**91C2	Swygert silty clay loam, 4 to 6 percent slopes, eroded	10.99	14.5%		UNF	**147	**48	**59	**73	0	0.00	**4.20	**110
375A	Rutland silty clay loam, 0 to 2 percent slopes	7.72	10.2%		FAV	180	58	71	97	0	0.00	5.52	133
**295B	Mokena silt loam, 2 to 4 percent slopes	4.46	5.9%		FAV	**170	**53	**65	**87	0	0.00	**4.84	**125
**375B	Rutland silty clay loam, 2 to 5 percent slopes	2.13	2.8%		FAV	**178	**57	**70	**96	0	0.00	**5.46	**132
**679B	Blackberry silt loam, 2 to 5 percent slopes	1.10	1.5%		FAV	**192	**59	**73	**102	0	**6.96	0.00	**141
Weighted Average						161.1	52.7	63.7	81.9	*-	0.10	4.62	120.2

Area Symbol: IL099, Soil Area Version: 10

Table: Optimum Crop Productivity Ratings for Illinois Soil by K.R. Olson and J.M. Lang, Office of Research, ACES, University of Illinois at Champaign-Urbana. Version: 1/2/2012 Amended Table S2 B811

Crop yields and productivity indices for optimum management (B811) are maintained at the following NRES web site:

<https://www.ideals.illinois.edu/handle/2142/1027/>

** Indexes adjusted for slope and erosion according to Bulletin 811 Table S3

^a UNF = unfavorable; FAV = favorable

^b Soils in the southern region were not rated for oats and are shown with a zero "0".

^c Soils in the northern region or in both regions were not rated for grain sorghum and are shown with a zero "0".

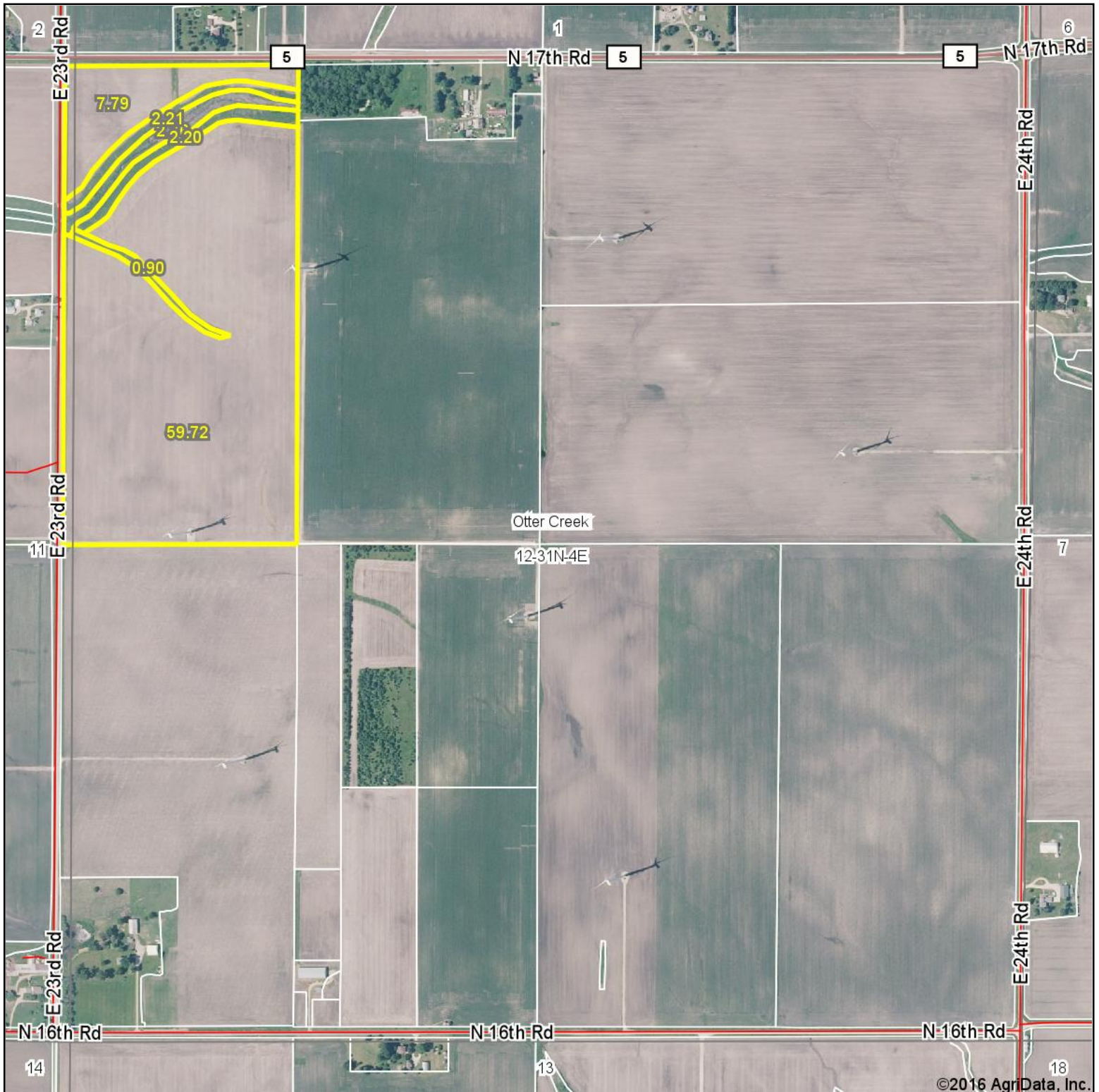
^d Soils in the poorly drained group were not rated for alfalfa and are shown with a zero "0".

^e Soils in the well drained group were not rated for grass-legume and are shown with a zero "0".

*c: Using Capabilities Class Dominant Condition Aggregation Method

Soils data provided by USDA and NRCS. Soils data provided by University of Illinois at Champaign-Urbana.

Aerial Map

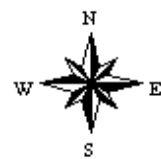


map center: 41° 10' 20.1, 88° 42' 42.67

0ft 843ft 1686ft

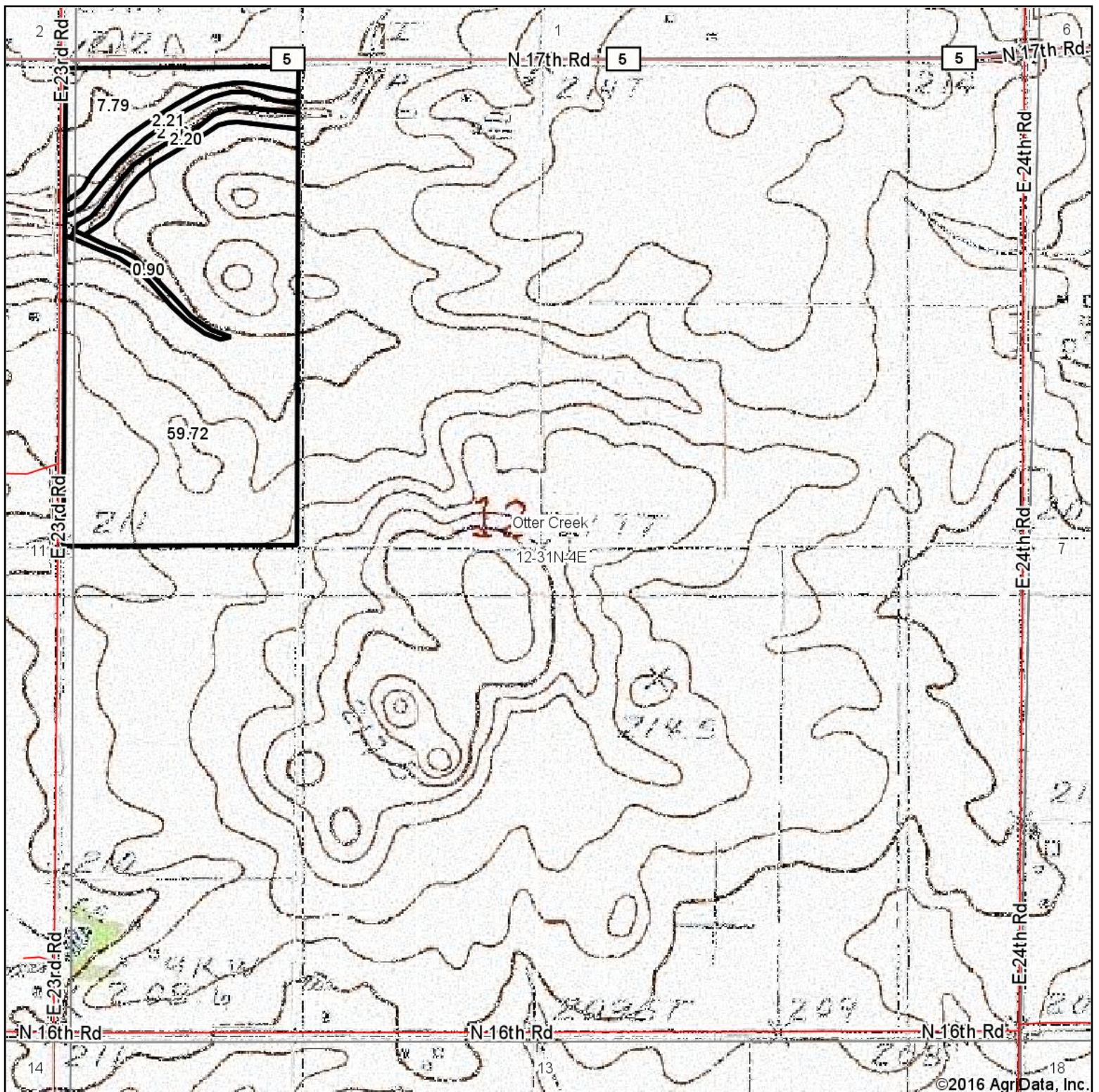
Maps Provided By:
 **surety**
CUSTOMIZED ONLINE MAPPING
© AgriData, Inc. 2016 www.AgriDataInc.com

12-31N-4E
La Salle County
Illinois



2/9/2016

Topography Map

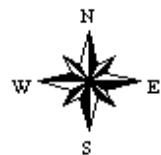


map center: 41° 10' 20.1, 88° 42' 42.67

0ft 843ft 1686ft

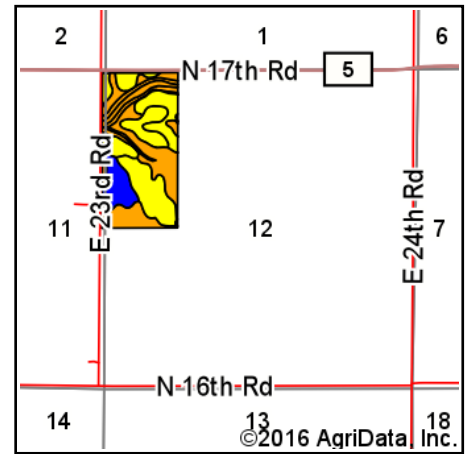
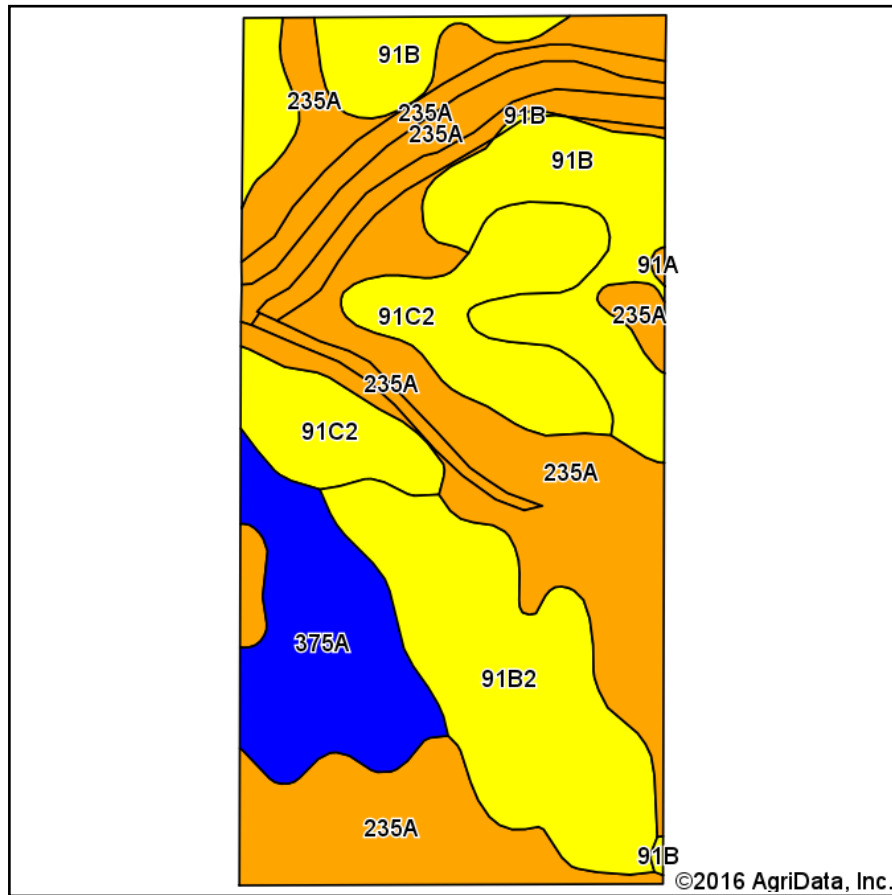
12-31N-4E
La Salle County
Illinois

Maps Provided By:
 **surety**
 CUSTOMIZED ONLINE MAPPING
 © AgriData, Inc. 2016 www.AgrDataInc.com



2/9/2016

Soils Map



State: **Illinois**
 County: **La Salle**
 Location: **12-31N-4E**
 Township: **Otter Creek**
 Acres: **75.58**
 Date: **2/9/2016**



Area Symbol: IL099, Soil Area Version: 10													
Code	Soil Description	Acres	Percent of field	Il. State Productivity Index Legend	Subsoil rooting ^a	Corn Bu/A	Soybeans Bu/A	Wheat Bu/A	Oats Bu/A	Sorghum ^c Bu/A	Alfalfa ^d hay, T/A	Grass-legume ^e hay, T/A	Crop productivity index for optimum management
235A	Bryce silty clay, 0 to 2 percent slopes	32.47	43.0%		FAV	162	54	64	82	0	0.00	4.77	121
**91B2	Swygert silty clay loam, 2 to 4 percent slopes, eroded	12.61	16.7%		UNF	**147	**48	**59	**73	0	0.00	**4.20	**110
**91B	Swygert silty clay loam, 2 to 4 percent slopes	11.86	15.7%		UNF	**156	**51	**62	**78	0	0.00	**4.47	**117
**91C2	Swygert silty clay loam, 4 to 6 percent slopes, eroded	10.08	13.3%		UNF	**147	**48	**59	**73	0	0.00	**4.20	**110
375A	Rutland silty clay loam, 0 to 2 percent slopes	8.48	11.2%		FAV	180	58	71	97	0	0.00	5.52	133
91A	Swygert silty clay loam, 0 to 2 percent slopes	0.08	0.1%		UNF	158	52	63	79	0	0.00	4.52	118
Weighted Average						158.6	52.2	63	80.4	*-	0.00	4.64	118.4

Area Symbol: IL099, Soil Area Version: 10

Table: Optimum Crop Productivity Ratings for Illinois Soil by K.R. Olson and J.M. Lang, Office of Research, ACES, University of Illinois at Champaign-Urbana. Version: 1/2/2012 Amended Table S2 B811

Crop yields and productivity indices for optimum management (B811) are maintained at the following NRES web site:

<https://www.ideals.illinois.edu/handle/2142/1027/>

** Indexes adjusted for slope and erosion according to Bulletin 811 Table S3

^a UNF = unfavorable; FAV = favorable

^b Soils in the southern region were not rated for oats and are shown with a zero "0".

^c Soils in the northern region or in both regions were not rated for grain sorghum and are shown with a zero "0".

^d Soils in the poorly drained group were not rated for alfalfa and are shown with a zero "0".

^e Soils in the well drained group were not rated for grass-legume and are shown with a zero "0".

*c: Using Capabilities Class Dominant Condition Aggregation Method

Soils data provided by USDA and NRCS. Soils data provided by University of Illinois at Champaign-Urbana.

Illinois

LaSalle

Report ID: FSA-156EZ

U.S. Department of Agriculture

Farm Service Agency

Abbreviated 156 Farm Record

FARM: 3227

Prepared: 2/8/16 12:00 PM

Crop Year: 2016

Page: 1 of 1

DISCLAIMER: This is data extracted from the web farm database. Because of potential messaging failures in MIDAS, this data is not guaranteed to be an accurate and complete representation of data contained in the MIDAS system, which is the system of record for Farm Records.

Operator Name

JOSEPH D JANSSEN

Farm Identifier

Not Applicable

Recon Number

Farms Associated with Operator:

None

CRP Contract Number(s): 1856B, 2360

Farmland	Cropland	DCP Cropland	WBP	WRP/EWP	CRP Cropland	GRP	Farm Status	Number of Tracts
151.25	142.22	142.22	0.0	0.0	9.51	0.0	Active	1
State Conservation	Other Conservation	Effective DCP Cropland	Double Cropped	MPL/FWP			FAV/WR History	
0.0	0.0	132.71	0.0	0.0			N	

ARC/PLC

ARC-IC
NONEARC-CO
CORN , SOYBNPLC
NONEPLC-Default
NONE

Crop	Base Acreage	CTAP Tran Yield	PLC Yield	CCC-505 CRP Reduction
CORN	97.5		141	0.0
SOYBEANS	35.2		41	0.0
Total Base Acres:	132.7			

Tract Number: 4753

Description: N15-W1/2 NW1/4 Sec 12 T31N R4E

FAV/WR
History

BIA Range Unit Number:

N

HEL Status: NHEL: no agricultural commodity planted on undetermined fields

Wetland Status: Wetland determinations not complete

WL Violations: None

Farmland	Cropland	DCP Cropland	WBP	WRP/EWP	CRP Cropland	GRP
151.25	142.22	142.22	0.0	0.0	9.51	0.0
State Conservation	Other Conservation	Effective DCP Cropland	Double Cropped	MPL/FWP		
0.0	0.0	132.71	0.0	0.0		

Crop	Base Acreage	CTAP Tran Yield	PLC Yield	CCC-505 CRP Reduction
CORN	97.5		141	0.0
SOYBEANS	35.2		41	0.0
Total Base Acres:	132.7			

Owners: BARBARA MASON
ELIZABETH LOVINGROBERTA A RICHARDS
CHRISTINE KRATZER

Other Producers: None

LA SALLE COUNTY TREASURER

JAMES L. SPELICH
707 EAST ETNA ROAD
P.O. BOX 1560
OTTAWA, IL 61350

RECEIPT PORTION - KEEP FOR YOUR RECORDS
2014 LA SALLE COUNTY REAL ESTATE TAX

DUE 7/1/2015	DUE 9/1/2015
FIRST INSTALLMENT	SECOND INSTALLMENT
\$432.13	\$432.13
FORFEITED	COSTS
\$0.00	
PENALTY	PENALTY
TOTAL PAID	TOTAL PAID
432.13 ✓ #141	432.13 ✓ #140 9/15/15

8/13/15

LA SALLE COUNTY REAL ESTATE TAX BILL

PIN
34-11-203-000
ACRES
76.62
BILL NUMBER
60589
CLASS CODE
21
TAX CODE
OZ002
TOWNSHIP
34-OTTER CREEK
TAXABLE VALUE
10,608

96 42126 1 AV 0.381 0.579

LOVING, ELIZABETH B ETAL
1231 N 1709TH RD
STREATOR, IL 61364-8983

PROPERTY DESCRIPTION

E1/2 NE1/4 (EX PT LEASED FOR TURBINE T126) (EX
277 X 370 TRACT DESC DOC 2010-19307)

ASSESSED TO: LOVING, ELIZABETH B ETAL

FORMULA FOR TAX CALCULATION - 2014

Land	+	0
Farm Land	+	10,608
Building	+	0
Farm Building	+	0
B. Of R. Equalized	=	10,608
State Eq. Factors *	x	1
State Eq. Value	=	10,608
Home Improvement	-	0
Owner Occupied	-	0
Senior Citizen	-	0
Disabled Veteran	-	0
Senior Assessment Freeze	-	0
Taxable Value	=	10,608
Tax Rate	x	8.14714
Real Estate Tax	=	\$864.26
Drainage Tax	=	\$0.00
Abated Taxes	=	\$0.00
Previous Year Taxable Value		9,644

ASSESSOR'S NAME SEE REVERSE SIDE	TOTAL TAX DUE
	\$864.26
1977 EQUALIZED VALUE	FAIR MARKET VALUE
0.00	0.00

LOCATION OF PROPERTY	SECT/LOT	TWP	RANGE	ACRES
				76.62
Taxing Body	Prior Rate	Prior Amount	Current Rate	Current Amount
COUNTY	0.76673	73.95	0.79371	84.19
- SOCIAL SECURITY	0.2065	19.91	0.21514	22.83
OTTER CREEK TWP	0.15759	15.20	0.1617	17.16
- SOCIAL SECURITY	0.0057	0.55	0.00568	0.60
OTTER CREEK TWP ROAD	0.24824	23.94	0.25094	26.62
- SOCIAL SECURITY	0.0038	0.37	0.00379	0.40
STREATOR H#40	2.74411	264.64	2.81067	298.16
- SOCIAL SECURITY	0.14978	14.45	0.1516	16.08
GRAND RIDGE G#95	2.90951	280.60	2.92091	309.86
- SOCIAL SECURITY	0.11762	11.34	0.09405	9.97
IVCC J513	0.35676	34.40	0.35787	37.96
- SOCIAL SECURITY	0.00828	0.80	0.00902	0.96
ALLEN FIRE	0.35455	34.19	0.37206	39.47
Total	8.02917	774.34	8.14714	864.26

FIRST INSTALLMENT	AMOUNT	SECOND INSTALLMENT	AMOUNT
DUE DATE: 7/1/2015	\$432.13	DUE DATE: 9/1/2015	\$432.13

\$396.48